



Axis^{EN}

Powerful, versatile
EN54 fire systems



Contents

Advanced Overview	4
High-Performance Fire Panels	6
Axis EN Fire Panels	9
Axis EN System Diagram	10
AxisGo – The New Single-Loop Fire Panel	12
High-Performance Detection	14
Axis EN Wired Devices	16
Axis EN Wireless Devices	20
AlarmCalm – Complete False Alarm Management	22
TouchControl – Remote Control Terminal And Repeater	23
Advanced Networking	24
Fire System Software	25
Custom-Built Panels	26
Technical Support	27
Axis EN Parts List	28



AxisGo

The powerful,
flexible, single-loop fire panel

Designed to be fast to fit, quick to configure and easy to use, AxisGo saves install time whilst bringing you complete peace of mind that your single-panel site has the highest levels of fire protection.

Offering cost-effective access to popular premium features from our Axis EN range in a simpler, non-networkable format, AxisGo provides powerful protection for a wide range of smaller sites.

Packed with future-proof technology and flexible features – including false alarm management, built-in zonal LEDs and a handy service tool – AxisGo's ready to become your Go-to!

Creating a safer future



Advanced – Made in the UK. Trusted around the world

At Advanced, we're committed to building a safer future. We create fire protection and life safety solutions that protect people and property in more than 80 countries across the globe.

Our products are shaped by decades of research and development expertise as well as ongoing investment in new technologies. This ensures they provide years of high performance and reliability – for ultimate peace of mind.

Everything we deliver is rigorously tested and approved to exacting quality standards – which is why Advanced products are trusted by customers the world over and synonymous with quality, performance and ease of use.



Advanced headquarters, Newcastle, UK



We understand that few fire protection challenges are the same, so as well as our mass-customised ranges, we also offer fully-customised solutions. This flexibility gives you complete control over the functions, format and finish of products to suit your site's unique specification.

We are dedicated to providing excellent service and have an international network of offices and agents to help you access sales support with ease – wherever you are in the world.

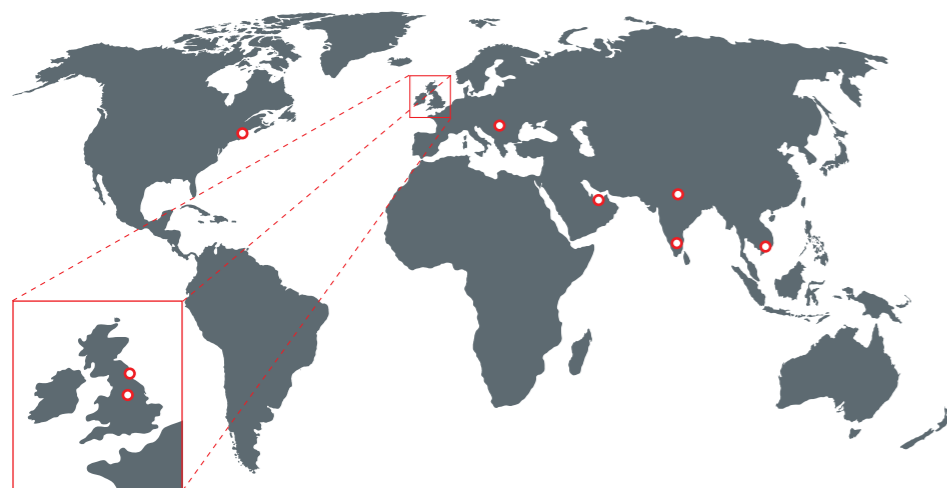


In addition, our training and technical services are free of charge to all our direct customers and consistently rated as excellent.

For added reassurance, Advanced is part of the safety sector of FTSE 100 company Halma plc. This global group of life-saving technology companies has a clear purpose to grow a safer, cleaner, healthier future for everyone, every day.



A Halma company



Landmark Tower, Dubai, UAE



Petronas Refinery, Kuala Lumpur, Malaysia

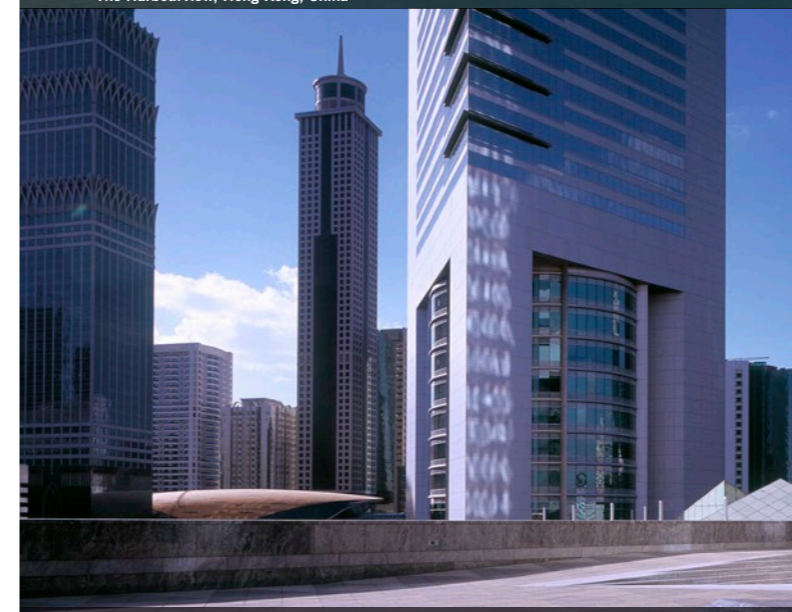
Axis^{EN} protects...



The Harbourview, Hong Kong, China



The Robinson Club, Ierapetra, Crete



Dubai Hills Estate Business Park, Dubai, UAE



Communications Regulation Commission office, Sofia, Bulgaria

High-Performance Fire Panels

Axis^{EN}

- is our complete solution for customers demanding a versatile, high-performing fire system that's fully approved to EN54 Parts 2, 4 and 13
- combines addressable panels with a versatile and comprehensive range of wired and wireless devices to bring you performance, quality and ease of use
- includes intuitive programming, powerful networking, comprehensive cause and effect and unique diagnostic features that put you in complete control of your fire protection and provide that all-important peace of mind
- is designed to go anywhere you need high quality, reliable and easy-to-use fire detection and control, from mass transportation and industrial complexes to landmark developments, historic buildings and public services.



Axis EN fire panels have been certified by FM Approvals, enabling them to carry the FM APPROVED diamond, one of the most prestigious certification marks in the world.



Easy to install and use

Axis EN is built on Advanced's outstanding pedigree of fire alarm and detection experience. Research and development involved installers, specifiers, consultants and end users across the world, to bring you a range of EN54-approved fire panels that are simple to install, configure and use.

- Easy-fix removable chassis and in-built software make Axis EN fire panels quick and easy to set up
- Powerful networking, extensive configuration options and comprehensive cause and effect put you in complete control
- Intuitive controls and menus, with simple click-and-select programming, for simple and easy commissioning
- The panels support intelligent remote terminals, IP Gateway, I/O drivers and BMS interface, for integration with building management systems
- Our highly rated technical support team can help with advice, tips and training. We also have an extensive collection of 'how to' videos on our YouTube channel.

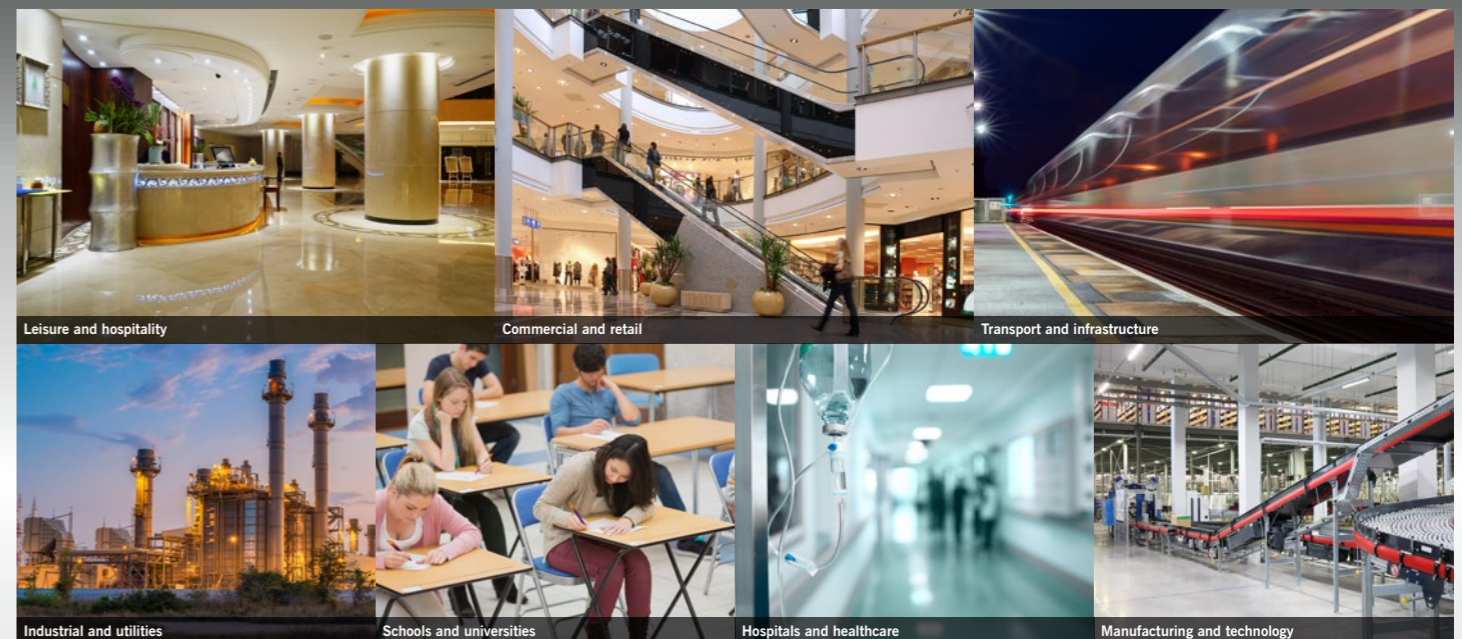


Scalable and flexible

We know that sites can expand, and fire protection requirements evolve over time.

That's why we've designed Axis EN to be scalable and flexible, able to adapt as required with minimal fuss or disruption.

- Standalone one, two, four or eight loop formats so you can choose the panel size that meets your requirements and budget
- Remote display terminals available including TouchControl – our 10"/25.4cm touchscreen with interactive maps and zone plans for use in public reception areas
- Up to 240 devices per loop and an overall capacity of 200,000 devices per network
- Every panel is networkable with up to 200 network nodes and 2,000 fire detection zones
- Versatile, thanks to a comprehensive wired and wireless detector range so you can build a system that meets your current and future needs.





Packed with premium features

Every Axis EN panel comes with a host of advanced features built in as standard, giving you peace of mind that you won't need to buy expensive add-ons in the future.

- Unique diagnostic features include 'scope on board' to provide readings on the panel from any loop, making it easy to identify and investigate any issues
- Network diagnostic tool prevents fires and faults from being transmitted across the network
- Built-in multimeter measures all voltages and currents across the system, so you can speed up the commissioning process by identifying voltage/current levels in real time
- Every panel includes AlarmCalm false alarm management software to help you minimise unwanted alarms, with 200 programmable false alarm management areas per panel
- You can monitor the circuit from any panel or remote terminal and see a complete device history on every panel
- Standard peripherals include direct USB and RS232 PC connections, and peripheral expansion is built in for added peace of mind
- Modular in construction, with mass customisation options including the ability to program your own company logo to appear on the fire panel screen
- 20 built-in, fully programmable LEDs as standard without the need to buy a separate LED zone card
- On-board or optional remote battery temperature sensor ensures optimum operational efficiency and life
- 4 programmable push buttons on the front of the panel for user customisation according to your fire system's needs
- 5,000 event and diagnostic, and 500 fire event log entries, for comprehensive tracking and auditing
- Timed enablement of isolated zones, input and output devices, to program and manage fire system response and reporting.



Powerful, flexible service reporting

Every Axis EN panel includes an inbuilt, easy-to-use, windows-based service tool which saves you time and money by providing easy, instant access to historic and real-time device data, and shows proof of servicing at a glance.

- Demonstrate proof of servicing, download service reports, inspect the device history and keep track of service schedules
- Customisable data filters make it easy to focus on potential trouble spots and ensure they're checked and tested during servicing
- Predict which devices are becoming contaminated so you can clean/replace them before they cause a false alarm
- Customise reports to show the data you need and export it as PDF, Excel or HTML files makes it easy to prove compliance.



Why do I need Part 13?

Part 13 compliance ensures that a fire system will continue to perform to its maximum capability during a fire situation.

Increased current in alarm conditions combined with a high-resistance connection (e.g. an incorrectly tightened screw in a sounder base), could prevent the sounders and beacons from operating on what would have incorrectly appeared to have been an acceptable 'fault-free' installation.

Axis EN continuously monitors all transmission lines for compliance, checking and reporting faults every minute of every day.

Fire panels

Axis EN: 1 Loop



- Single loop
- Small enclosure
- Maximum 7Ah internal batteries
- 20 programmable LEDs
- Optional programmable key switch
- Up to 8 programmable key switches or 4 plus printer
- Medium, large and deep enclosure options
- Product code: Axis-5101*

Axis EN: 1-2 Loop



- One or two loops
- Medium enclosure
- Maximum 12Ah internal batteries
- Up to 50 additional programmable LEDs
- Up to 8 programmable key switches or 4 plus printer
- Plexi-glass door option
- Large and deep enclosure options
- Product code: Axis-5201*

Axis EN: 1-4 Loop



- One to four loops
- Large enclosure
- Standard enclosure supports max 17Ah internal batteries. Deep enclosure option supports max 45Ah
- Up to 200 additional programmable LEDs
- Up to 8 programmable key switches or 4 plus printer
- Plexi-glass door option
- Deep and extended enclosure options
- Product code: Axis-5401*

Axis EN: 2-8 Loop



- Two to eight loops
- Extended enclosure
- Maximum 45Ah internal batteries
- Up to 200 additional programmable LEDs, 2 x switch cards or mimic
- Up to 8 programmable key switches or 4 plus printer
- Plexi-glass door and external battery box option
- Product code: Axis-5802*

* part code denotes loop quantity

Axis EN: Integrated Peripheral Bus

- Integrated P-Bus as standard
- Up to 32 expansion cards can be added to an Axis EN panel
- Peripheral expansion option cards include
 - 4-way relay card
 - 4-way sounder card
 - 10-way monitored input card
 - 8-way relay card
 - ESPA card
 - Conventional zone card (8 class B or 4 class A zones + 3 programmable relays)
 - 16-way push button / 48 LED card
 - 16-way input / 48 output (direct drive LED outputs)
 - Fire and fault routing / protection card
 - Redundant controller
 - Smoke control interface

Axis EN: Remote Terminals

- Four types available including;
 - TouchControl touchscreen with active maps
 - Remote display terminal
 - Remote control terminal with additional mute, silence, reset and resound keys
 - Remote control terminal with additional LED status indication, four programmable push buttons, mute, silence, reset, resound, lamp test and evacuate keys
- Optional level 2 access-enable key switch. (Not TouchControl)
- Integrated standard or fault-tolerant network interface with screen termination point
- Programmable display for up to 2,000 zones along with sector-based controls
- Product codes: MX-5010, MX-5020, MX-5030, MX-5010/FT, MX-5020/FT, MX-5030/FT, TOUCH-10, TOUCH-10/FT

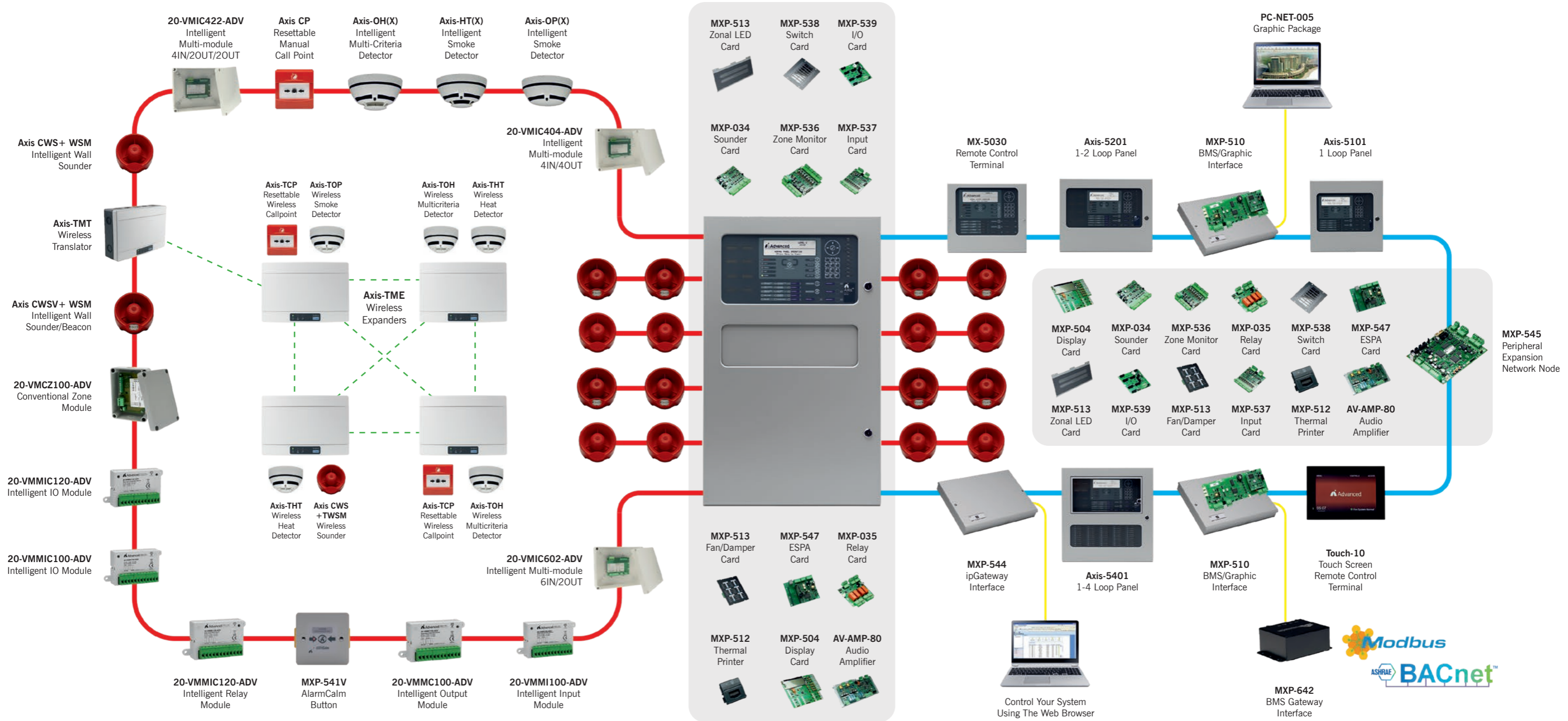
Axis EN: Rack Mount

- Rack-mountable control panels
- Additional 16U and 20U high IP55 enclosures
- Rack-mount peripheral chassis plate, LED and switch card module options
- Dedicated mimic door option
- Product code: add suffix 'R' to panel part code(s) eg Axis-5101R



L to R = MX-5030, MX-5020, TOUCH-10

Axis^{EN} System Diagram



The New Single-Loop Fire Panel

AxisGo

- is the new-generation, single-loop fire panel from Advanced.
- brings you easy, cost-effective access to popular premium features from our Axis EN range in a simpler, non-networkable format.
- is the ideal solution for all your small to medium-sized sites where networking's not needed, but quality, performance and ease of use are.



Standalone fire protection for complete peace of mind

Please note: AxisGo is currently available in a selection of countries where EN54 Standards apply. For full details, please speak to your sales representative.



Easy to install and use

Time is money, so we've built in a host of features that make AxisGo a breeze to install, configure and use.

- An easy-fit chassis and unique door design ensure installation is fast and fuss free
- Familiar controls and menus mean there's no lengthy learning curve
- A new, intuitive ConfigTool makes setup quicker and easier than ever
- A powerful design checker allows you to prove your system will work without visiting site
- If you do need support, our highly rated technical services team's got your back with advice, tips and training.



Fast and efficient

AxisGo is designed with speed and efficiency in mind.

- Built-in peripherals including USB and ethernet ports
- Latest microcontroller technology ensures high-speed operation.



Feature-rich and flexible

We understand that small sites aren't always simple, so we've packed AxisGo with flexibility to give you the best of all worlds.

- A wide range of cause-and-effect programming to suit your site
- Comprehensive false alarm management and reduction options to minimise unwanted alarms
- Enhanced diagnostics for fewer faults, faster fixes and better performance
- Optional expansion module for fire and fault routing equipment
- 15 zonal LEDs as standard without the need to buy a separate LED zone card
- Our range of versatile Axis EN devices gives you complete freedom to quickly and easily design the perfect wired and wireless solutions for your site
- A choice of two panel address sizes so you only buy the capacity you need.



Ready for you now... and for the future

We understand that fire protection solutions need longevity.

- AxisGo's state-of-the-art technology ensures high performance today – and for years to come.

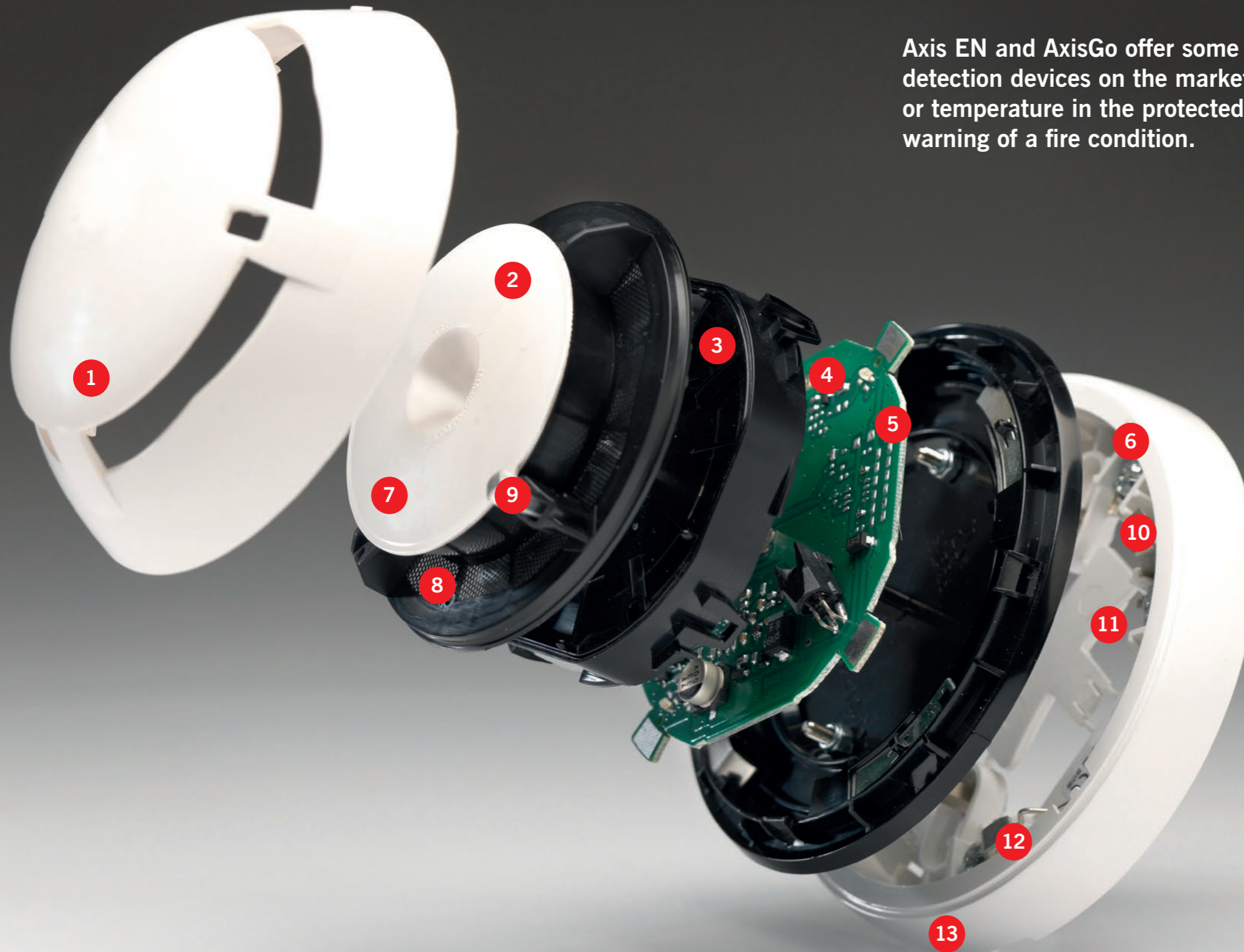
AxisGo parts list and order codes

AxisGo		
AxisGo1	AxisGo1 - 1-Loop Fire Alarm Panel – Grey	50 addresses
AxisGo+		
AxisGo1+	AxisGo1+ - 1-Loop Fire Alarm Panel – Grey	240 addresses
Options		
GOP-001	AxisGo PBUS Adaptor Card	
GOP-002	AxisGo Access Enable Key-Switch	
MXP-532	AxisGo Routing/Protection Interface	
MXP-506	AxisGo Routing Termination Card	

High-Performance Detection

Axis^{EN} AxisGo

Axis EN and AxisGo offer some of the best-performing wired and wireless detection devices on the market. By continuously sampling air and/or temperature in the protected area, these devices provide the earliest warning of a fire condition.



- 1 Unique **low-profile** device design suitable for any location.
- 2 **White disk** indicates **multicriteria detector**. **Black** indicates **heat detector**. Allows easy identification of device type from the floor.
- 3 Angled, dust-restrict chamber with unique reverse sedimentation design offers almost total **immunity to airborne contaminants and insects**.
- 4 **High-performance sensors** continuously monitor the environment to provide the earliest warning of a fire condition.
- 5 Intelligent algorithms deliver a **high degree of false alarm rejection**.
- 6 **Locking tab** prevents unauthorised removal of the device from the base.
- 7 Removable chamber cap for **easy cleaning**.
- 8 Fine, honeycomb mesh screens out dust, fibres and insects, whilst ensuring **maximum airflow for optimum detection** of genuine fires including low-energy and low-airflow fires.
- 9 Dual bi-colour LEDs offer clear **360° visibility**.
- 10 **Remote output** available to drive anything up to **17 mA**.
- 11 Handheld addressing with optional **address tabs** included in the base.
- 12 **Short-circuit spring** enables easy checking of loop continuity.
- 13 Detector base designed for **easy installation**.

Outstanding Devices

The Axis EN wired and wireless loop device range offers high performance, easy installation and maintenance, and a range of superior features and benefits suitable for almost any configuration.

- Axis EN devices can only be used on our systems (Axis EN and AxisGo), guaranteeing performance and reliability.
- Our device feature set delivers the very best performance across a vast range of applications and configurations, both as an individual sensor and when used in conjunction with our fire alarm logic.
- Intelligent algorithms in each sensor, unique chamber designs, airflow and dust filtration systems ensure a high degree of accuracy, sensitivity and false alarm rejection, which can then be augmented in our AlarmCalm software to provide the most complete solution to false alarms on the market.
- All devices are ultra-low current, allowing up to 240 devices per loop.
- A complete range of wired and wireless modules means there is a huge variety of configuration options from the loop.
- Ease of installation has been maximised with open mounting bases offering easy wiring and stability across a wide range of surface finishes, with a low-pressure, secure locking mechanism.
- Addressing and sensitivity settings can be set using a hand-held digital programmer or via auto addressing in the fire control panel.
- Alongside a range of unique service and maintenance features offered by Axis EN, the detectors have a magnet test capability.
- All detectors are available with and without bi-directional isolators to meet a range of performance and price points.
- Dual bi-colour LEDs (or single colour in the non-isolated variants) provide a 360° cone of visibility.
- All detectors have undergone comprehensive testing by EN and Duisberg Fire and Nuisance Tests.
- Approved to EN54.

Wired Range

Detectors and Mounting Base

Intelligent Optical Smoke Detector



- Continuously monitors the air in the protected area to provide the earliest warning of a fire condition
- Available with and without isolator
- With isolator approved to EN54-7 and EN54-17. Without isolator approved to EN54-7
- Product codes:
 - Intelligent Optical Smoke Detector with Isolator: Axis-OPX
 - Intelligent Optical Smoke Detector (no Isolator): Axis-OP

Intelligent Multicriteria Detector



- Continuously samples both the air and the temperature variation in the protected area to provide the earliest warning of a fire condition
- Available with and without isolator
- With isolator approved to EN54-5, EN54-7 and EN54-17. Without isolator approved to EN54-5 and EN54-7
- Nine modes of operation
- Product codes:
 - Intelligent Multicriteria Detector with Isolator: Axis-OHX
 - Intelligent Multicriteria Detector (no Isolator): Axis-OH

Intelligent Heat Detector



- Continuously samples for temperature variation in the protected area to provide the earliest warning of a fire condition in places where traditional smoke detection products are not suitable
- Two thermal sensitivity levels: Rate of Rise (A1R) and Class BS
- Available with and without isolator
- With isolator approved to EN54-5 and EN54-17. Without isolator approved to EN54-5
- Product codes:
 - Intelligent Heat Detector with Isolator: Axis-HTX
 - Intelligent Heat Detector (no Isolator): Axis-HT

Axis Mounting Base



- High reliability
- Device-locking capability
- Easy central cable entry
- Integral device identification tab
- Remote indicator connections
- Built-in continuity spring
- Product code: Axis-MB

Wired Range

Modules



Single Input

- Input monitored for normal, short, alarm and open conditions
- Available in wall-mount and mini formats
- Auto or manual addressing
- Bi-directional short-circuit isolators
- Red/green panel driven LED
- Plug-in connections
- Product codes: 20-VM100-ADV (wall-mount) 20-VMM100-ADV (mini)



Single Supervised Outputs

- Output monitored for open and short circuits
- Available in wall-mount and mini formats
- Auto or manual addressing
- Bi-directional short-circuit isolators
- Red/green panel driven LED
- Plug-in connections
- Product codes: 20-VMC100-ADV (wall-mount) 20-VMMC100-ADV (mini)



Loop-Powered Multi Modules

- Microprocessor-controlled interface devices permitting the monitoring and control of auxiliary equipment
- Each input/output individually programmable
- Optional fail-safe setup
- Loop driven
- Each module takes up to 8 addresses
- IP65-rated enclosure
- Product codes:
 - 20-VMIC404-ADV (4 single-channel monitored input contacts and 4 volt-free 'form C' changeover contacts)
 - 20-VMIC422-ADV (4 single-channel monitored input contacts, 2 supervised output contacts and 2 volt-free 'form C' changeover contacts)
 - 20-VMIC602-ADV (6 single-channel monitored input contacts and 2 volt-free 'form C' changeover contacts)



Single Input and Single Relay Output

- Input monitored for normal, short, alarm and open conditions
- Programmable Form C changeover contact for auxiliary device control
- Available in wall-mount and mini formats
- Auto or manual addressing
- Bi-directional short-circuit isolators
- Red/green panel driven LED
- Plug-in connections
- Product codes: 20-VMIC120-ADV (wall-mount) 20-VMMIC120-ADV (mini)



Single Input and Supervised Output

- Input monitored for normal, short, alarm and open conditions
- Output monitored for open and short circuits
- Available in wall-mount and mini format
- Auto or manual addressing
- Bi-directional short-circuit isolators
- Red/green panel driven LED
- Plug-in connections
- Product codes: 20-VMIC100-ADV (wall-mount) 20-VMMIC100-ADV (mini)



Single Relay Output

- Programmable Form C changeover contact for auxiliary device control
- Available in wall-mount and mini formats
- Auto or manual addressing
- Bi-directional short-circuit isolators
- Red/green panel driven LED
- Plug-in connections
- Product codes: 20-VMC120-ADV (wall-mount) 20-VMMC120-ADV (mini)



Conventional Zone Module

- Compatible with majority of well-known European conventional detectors
- External or loop powered
- Fully programmable and flexible
- Program via panel or handheld programmer
- Adjustable current limit by panel
- Identifies all conditions on conventional zone
- Auto or manual addressing
- Bi-directional short-circuit isolators
- Programmable Form C changeover relay included
- Product code: 20-VMCZ100-ADV

Wired Range

Sounders and Sounder Beacons



Intelligent Sounder Base

- 32 programmable tones
- Built-in loop isolators
- Fully intelligent
- Synchronised sounder
- Adjustable volume output
- Auto-addressable when detector head attached
- Programmable via the panel or device programming tool
- Includes device identification tab
- Product code: Axis-S2MB



Slave Sounder Base

- 32 selectable tones
- Low current, high output local sounder
- Tone and volume set via DIP switch
- Adjustable volume output
- Includes device identification tab
- Easy central cable entry
- Does not need any addressing
- Provides a lower cost alternative to the intelligent sounder base
- Product code: Axis-S2AMB



Intelligent Sounder Beacon Base (White or Red Flash)

- 32 programmable tones
- Built-in loop isolators
- Fully intelligent
- Adjustable volume output
- Auto-addressable when detector head attached
- Programmable via the panel or device programming tool
- Includes device identification tab
- Compatible with standard remote activation
- Synchronised sounder
- Easy installation and cabling
- Low-profile design
- 360° degree of visibility of VAD when activated
- Red flash is unique and useful for retrofits
- Product codes: Axis-SV2MB (white flash) Axis-SV2MBRF (red flash)



Slave Sounder Beacon Base (white flash)

- 32 selectable tones
- Low current, high output local sounder
- Visual output reinforces audible warning and has a fixed pattern and intensity
- Tone and volume set via DIP switch
- Adjustable volume output
- Includes device identification tab
- Does not require addressing
- Easy central cable entry
- Provides a lower cost alternative to the intelligent sounder beacon base
- Product code: Axis-SV2AMB

Conventional



Wall Sounder

- Flexible modular design
- Approved for outdoor use to EN54-3 (type B)
- 32 tone settings
- Two-stage alarm capability
- Weatherproof to IP65
- High sound output capability
- 4 adjustable volume settings
- Must include Intelligent Sounder Interface Module Axis-WSM to be addressable
- Extremely low current
- Embedded microphone for self test
- Product code: Axis-CWS
- Also available in white
- Product code: Axis-CWS/W for white option
- To make this addressable, order with Axis-WSM
- Extremely easy to insert the Axis-WSM into the base of the Axis-CWS



Wall Sounder Beacon (VAD)

- Flexible modular design
- Approved for outdoor use to EN54-3 (type B) and EN54-23
- 32 tone settings
- Two-stage alarm capability
- Weatherproof to IP65
- High sound output capability
- Silent sounder setting for beacon-only use
- 4 adjustable volume settings
- Must include Intelligent Sounder Interface Module Axis-WSM
- Extremely low current
- Embedded microphone for self test
- Product code: Axis-CWSV
- Available in white
- Product code: Axis-CWSV/W
- To make this addressable, order with Axis-WSM
- Extremely easy to insert the Axis-WSM into the base of the Axis-CWS



Ceiling Beacon

- Ceiling mounted
- Low-power, high-output LED technology
- Coverage radius of 7.5m at ceiling height of 3m
- Flash rate of 0.5Hz (1 every 2 seconds)
- High-intensity white LED
- Anti-tamper lock
- Uses a standard detector base (Axis-MB)
- Approved to EN54-23
- Product code: 20-CBE1002



Intelligent Sounder Interface Module

- Designed to allow use of conventional wall sounder (Axis-CWS) and conventional wall sounder with VAD (Axis-CWSV) on an Axis EN intelligent loop
- Flexible modular design
- Easy to install
- Manual and auto addressing options
- Built-in short-circuit isolators
- Intelligent two-stage alarm capability
- Microphone self-test facility
- Fits Axis EN conventional wall sounders and sounder beacons, making them addressable and loop powered
- Product code: Axis-WSM

Wired Range

Accessories



Programming Unit

- Easy to use for all programmable variables from the device range including the loop address
- Clear device display
- Auto shut-off to save battery
- Displays the sensor analogue values
- Includes programming cables for backwards compatibility
- Product code: Axis-PU



Remote Indicator

- Low current consumption
- Output programmable by panel
- Product code: 20-FI100-ADV



Silicone Base Gasket

- Sits between device and ceiling to prevent moisture ingress
- Fits any detector (smoke, heat or multi) between the plastic base and the surface it is mounted on
- Product code: Axis-WP



Module Mounting Boxes

- Polycarbonate enclosures for modules
- Product codes: 20-MB100-ADV (86x86x30mm) 20-DMB100-ADV (86x86x52mm) 20-BMB100-BX (170x210x66mm)



Duct Detector Housing

- Easy to install duct detector housing
- Innovative single tube air sampling system
- Simple servicing and maintenance
- Compatible detectors - Axis-OPX and OP (smoke), Axis-OHX and OH (smoke & heat)
- Sampling tube available in 0.6m, 1.5m and 2.8m lengths
- Product codes: Axis-DDH (duct detector housing) 20-DDH-BRA-ADV (bracket) 20-DDH-ST0.6-ADV 20-DDH-ST1.5-ADV 20-DDH-ST2.8-ADV



Detector Base Housing

- For detector installations in difficult environments
- Diverts excess water and condensation away from the detector
- Product codes: 20-UA-BCW-H37 (shallow base) 20-UA-BCW-H65 (deep base)

Call Points



Weatherproof Call Point Housing

- Easy and fast installation
- Breakseal to increase visible deterrent from misuse
- Spacers for surface and flush installations
- Reduces unwanted alarms
- Provides environmental and mechanical protection
- Simple retrofit to existing installations
- Suitable for all Axis EN call points
- Product codes: 20-WHCP-BBR (red back-box) 20-WHCP-BBC (clear back-box)



Resettable Manual Call Point

- EN54-11 and EN54-17 approved
- Glass appearance maintains operator deterrence
- Positive activation that mimics the feel of breaking glass
- Visible warning flag confirms activation
- Simple key to reset operating element - no broken glass
- No glass elements to break, lose or incorrectly fit during installation
- Complete functional test with every activation
- Available in red or yellow
- IP67 waterproof call point available
- Product codes: Axis-CP (red) Axis-CP/Y (yellow) Axis-WCP (waterproof) Axis-CPKEY (spare reset key) Axis-CPCL (transparent cover) Axis-CPFMP (flush mount plate)

AlarmCalm: False Alarm Management



AlarmCalm Button

- Intelligent loop device
- Easy installation
- Used with AlarmCalm software for false alarm verification
- Programmable push button for local silence
- Product code: MXP-541V-002

Wireless Range

Industry-Leading Wireless Detection

Advanced's EN54-approved wireless range is easy to install and provides a reliable wireless fire protection solution.

- Operates on 868-870 MHz frequency range
- Fully monitored for faults and system failures
- Internal antenna design protects from environmental conditions, vandalism, accidental damage or misuse
- Intelligent signal processing across 60 communication channels
- Mesh expander technology programmable for redundant path to the translator
- Signal strength increases automatically if there is any interference
- Full analogue data availability, e.g. detector values, wireless link quality, battery level, chamber drift compensation status
- Coverage extends up to 150 metres from translator to detector and 250 metres from translator to expander
- Survey required to establish signal strength
- Dual batteries ensure continued operation should a single battery cell fail
- Can be combined as a hybrid system with wired devices and works with the wired AlarmCalm button

Detectors

- All Axis EN wireless devices are fully intelligent and compatible with all Axis wireless translator and expander modules
- Unique dual-angle optical chamber design
- Internal algorithm processing optimises performance
- Provides enhanced rejection of alarms from steam, aerosols and dust
- Bi-directional communication protocol between all wireless devices
- Unique inverted cone chamber minimises any dust settlement
- Hexagonal honeycomb mesh design reduces insect ingress and maintains optimum sensitivity to real fires
- Device identification tab
- Dual-angle scattering analysis
- Fast test feature for engineer testing



Wireless Smoke Detector

- Dual photo receivers discriminate between real and unwanted alarms
- Approved to EN54-7 and EN54-25
- Product code: Axis-TOP



Wireless Heat Detector

- Twin alarm LEDs for 360° visibility
- Multiple sensitivity settings
- Approved to EN54-5 and EN54-25
- Product code: Axis-THT



Wireless Multicriteria Detector

- Twin alarm LEDs for 360° visibility
- Multiple smoke and heat sensitivity settings
- Approved to EN54-7, EN54-5 and EN54-25
- Product code: Axis-TOH

Sounders and Sounder Beacons



Wireless Sounder Base

- Wireless communication between the control panel and the sounder base via the wire to wireless translator interface module using Axis EN protocol
- Communication meets EN 54-25
- Communication range up to 200m in open space
- Bi-colour LED provides visual indication for device status
- 32 selectable tones
- 3 volume levels
- Product code: Axis-TSMB



Wireless Sounder Beacon Base

- Wireless communication between the control panel and the sounder base via the wire to wireless translator interface module using Axis EN protocol
- The sounder has a supplementary visual indicator that reinforces the audible warning
- Communication meets EN 54-25
- Communication range up to 200m in open space
- Bi-colour LED provides visual indication for device status
- 32 selectable tones
- 3 volume levels
- Product codes: Axis-TSVMB (white flash) Axis-TSVMBRF (red flash)

Call Points



Resettable Wireless Manual Call Point

- Bi-directional communication protocol between all wireless devices
- Glass appearance maintains operator deterrence
- Visible warning flag confirms activation
- Simple key to reset operating element - no broken glass
- Complete functional test with every activation
- Product code: Axis-TCP

Wireless Range

Modules



Wireless Output Module

- Bi-directional wireless comms
- Fully supervised for fault conditions (with EOL resistors)
- Changeover relay and 12/24V output
- On site programmable
- 22 pairs of field channels
- Uses dual low-cost lithium battery
- Easy scan and link programming option
- Product code: Axis-TMO (battery powered)



Wireless Wall Sounder Module

- Flexible modular design
- Bi-directional wireless communication
- Fits Axis conventional wall sounders and sounder beacons
- Self-optimising wireless communication
- Product code: Axis-TWSM



Wireless Input Module

- Bi-directional wireless comms
- Fully supervised for alarm and fault conditions (with EOL resistors)
- 22 pairs of field channels
- Uses dual low-cost lithium battery
- Easy scan and link programming option
- Product code: Axis-TMI

Translators and Expanders



Wireless Translator

- Bi-directional wireless comms
- Long communication range (~1km in open air)
- Compatible with up to 15 expanders
- Loop-powered or external power supply
- Low current consumption
- On-site programming via internal keypad, or wireless/wired PC connection
- Easy scan and link programming option
- Product code: Axis-TMT



Wireless Expander

- Bi-directional wireless comms
- Long communication range (up to 1km in open air)
- Connects up to 32 wireless devices per expander
- Compatible with all intelligent and conventional translators
- Requires external power supply
- Low current consumption
- External PSU status supervision
- Easy scan and link programming option
- Product code: Axis-TME

Accessories



Sounder Base Covers

- Product codes: Axis-LID200/R (red) Axis-LID200/W (white)

Scan to find out more about our wireless fire protection





Verification



Investigation



Reduction

AlarmCalm

Redline false alarms

Complete False Alarm Management.

AlarmCalm uses fast hardware, powerful software and the high-performance technology in Axis EN loop devices to build a total solution to false alarms that's powerful and easy to configure.

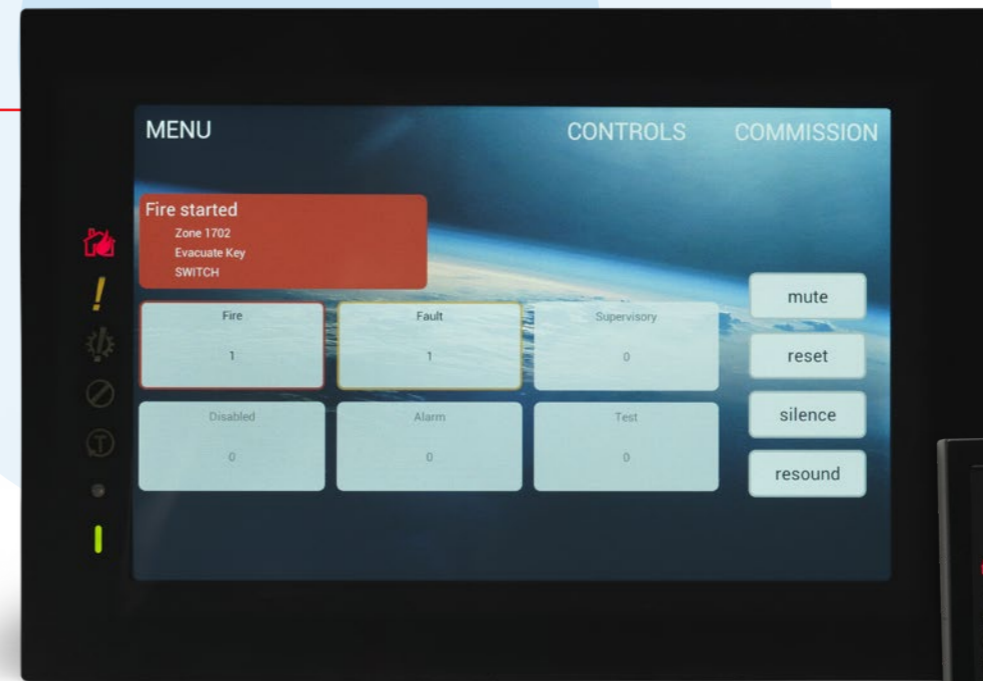
The AlarmCalm button is a fully intelligent verification device that is installed on the loop and works alongside the AlarmCalm software to allow occupants to acknowledge a fire alarm signal locally, if they believe it has been falsely triggered.



Features:

- **Complete Cause and Effect**
In-depth control over alarm verification and investigation delays to outputs.
- **Customised Management for any Site**
Divide your building(s) into 'building areas', each with quickly applied group or unique false alarm management settings. Maximal number of building areas is up to 2,000.
- **Unlimited Points**
No restriction to the number of points in a building area and you can configure by Points.
- **Global Acknowledgement**
Panel inputs can be programmed to manage verification and output delays.
- **Full Event Log**
All verification and output delays recorded in panel event logs.
- **Flexible Verification**
Set verification by building area, day/night, on or off, change verification times, verification by second device or device mode change.
- **Multiple Verification Inputs and Outputs**
Inputs can include optical, heat and multisensors, callpoints and AlarmCalm button or other input modules. Outputs can be sounders, beacons and relays etc. Sounder ring styles can be configured.
- **Failsafe Operation**
Total control over verification times. You can only extend verification once. Set max number of areas in verification before full fire is signaled.
- **Easy Management of Outputs**
Output delays are handled in exactly the same way as verifications, making set up very simple.

Contact us now for a demo by emailing enquiries@advancedco.com



TouchControl

Touchscreen. Remote Control Terminal. Active Maps & Zone Plans.

TouchControl is Advanced's innovative remote control terminal and repeater.

Easily installed, its HD display enhances any architectural environment and takes system control and monitoring to the next level.

Features:

- **Attractive, low-profile HD display**
10"/25.4cm screen enhances prestigious environments.
- **Easy Slide-In Installation**
Two-part slide-in assembly for quick first fix and final install.
- **Cost Minimising**
It's a standalone unit, you don't add cost to the fire panel with a compromised touchscreen.
- **Easily Configured**
Fully active remote control terminal and network device almost immediately after installation.
- **Interactive Maps and Zone Plans**
Easily added, using any diagram via our Map App.
- **'At a Glance' System Status**
Unique interface allows easy monitoring and management of zones and devices.
- **Complete Control**
Three-level access to all the controls you'd find on an Advanced RCT via an easy-to-use interface.
- **Customisable Screen**
Choose from the preloaded background screens or add your own including installer logos. Run promotional presentations. Immediately reverts to fire use when system signal received.

Contact us now for a demo by emailing enquiries@advancedco.com

Advanced Networking

Our high-performance network technology works across the Axis EN range, delivering the easiest setup and best-performing fire panel networks available.

Easy connection

- Connect all Axis EN control panels, remote terminals and network peripherals together using fire-resistant two-core cable
- Reduced installation costs
- Caters for the smallest two-panel network through to the largest 200 panel, wide-area, networked system
- Simply add and connect a network card to any Axis EN control panel or remote terminal

Peer-to-peer system

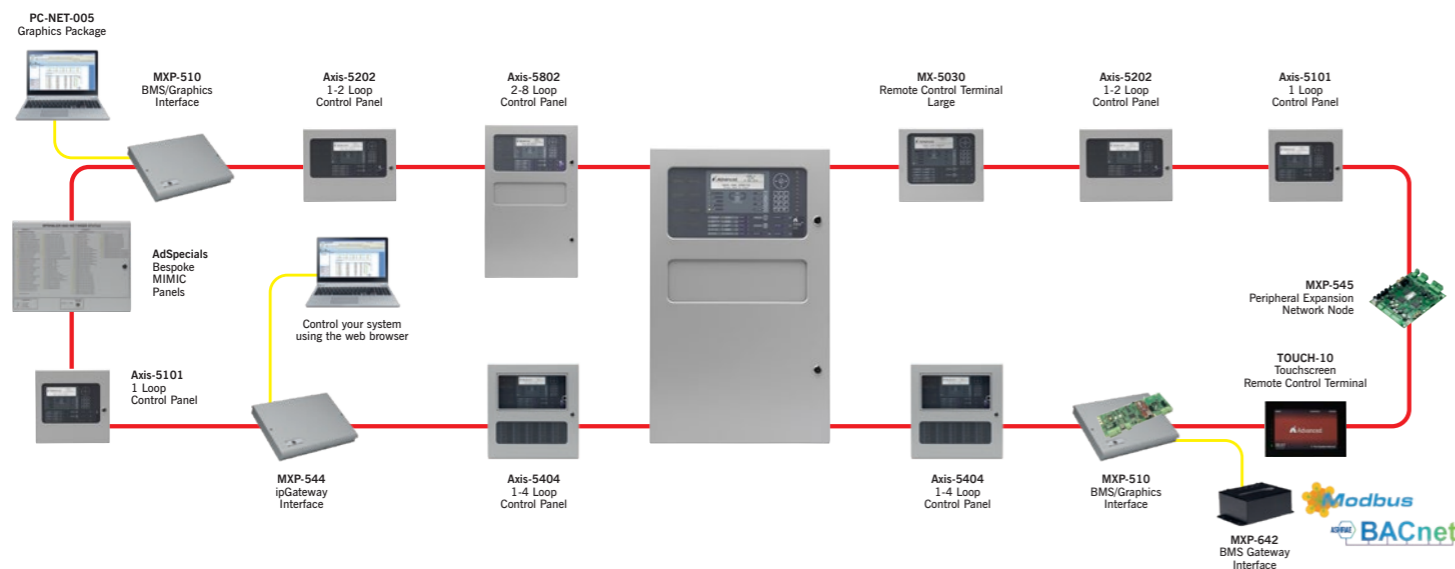
- Does not rely on a single 'master' panel to function
- Information from any input or output device can be passed over the network and displayed on any Axis EN control panel or remote terminal
- Details include Fire, General Alarm, Pre-Alarm, Fault, Control Inputs and Disablement

Zoning

- Networked systems can share up to 2,000 zones
- Autolearning the devices, adding text and assigning zone numbers is easy
- All other nodes on the network are instantly aware of a panel as soon as it is given a valid network node address

Diagnostic and status information

- All panels provide valuable diagnostic and status information and have the facility to prevent the transmission of fires or faults during commissioning
- DynamixTools software enables easy configuration of complicated cause and effect for more complex systems
- All configuration data is contained within one user-friendly network configuration file



Type of network	Standard	Fault tolerant
Typical use	Sites where one panel per building controls evacuation	Sites where more than one panel per building controls evacuation
Setup	Standard network card: Mxp-503	Fault-tolerant network card: Mxp-509
Maximum cable length	Up to 1.5 km	Up to 1.5 km between nodes
No. of nodes	32 (50 with booster)	200
No. of zones	2,000	2,000
Typical time to communicate first event	1 second	3.5 seconds

Fire Panel Software

DynamixTools fire system software is easy to understand and makes the complicated simple.

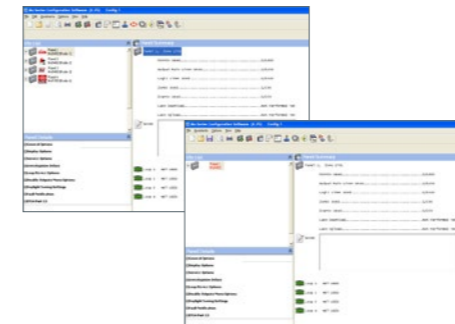
DynamixTools comprises a range of specific tools that help you achieve what you want quickly and easily.

DynamixTools is being continually developed for the Axis EN panel range, adding new features and performance enhancements, false alarm management and alarm verification features.

Our position in the global fire industry means we help guide legislation and can implement software changes quickly, keeping our systems right up to date. We also listen closely to our customers and often produce features for specific client requirements.

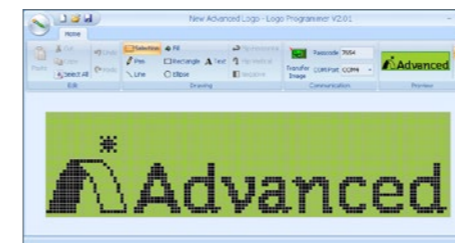
ConfigTool

- Full configuration of single-panel or network system
- Automatic design check of site configuration
- Assistance menu helps the engineer to easily configure panels
- Import and export information and print configuration reports



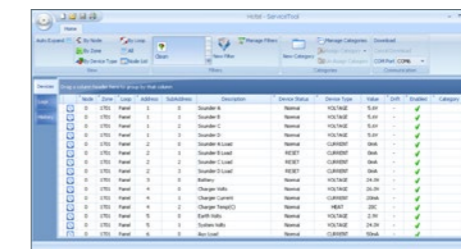
LogoTool

- Allows the installer's logo to be displayed on the panel's graphical LCD display during normal operation
- Uploads standard bitmap images
- Tool allows creation of logos
- JPG and GIF images can be imported



ServiceTool

- Extract device information and event logs from single or multiple panels
- Device history including last activation, test, enable, disable and date created
- User-defined filters allow data to be grouped and searched in many different ways
- View device status, analogue values and drift (contaminated) information
- Network simulation and test feature
- Categorise events and create user-defined reports



MapApp

- Used to easily add site maps to TouchControl touchscreen repeater
- Can use any illustration from a photo to a line drawing, isometric or plan
- Simply draw hotspots onto drawing to add fire zones
- Export to microSD card to add to TouchControl RCT



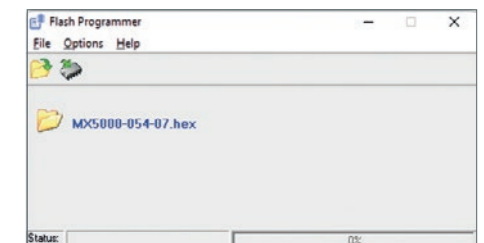
TerminalTool

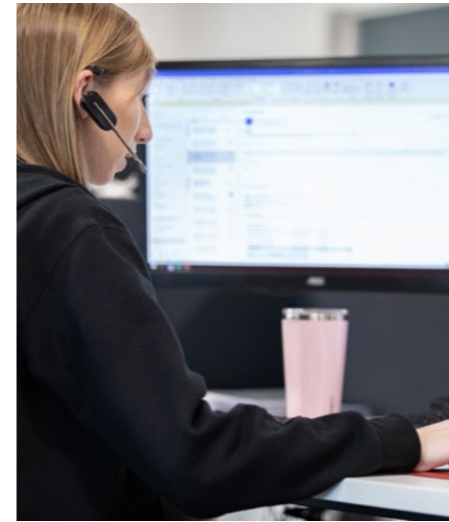
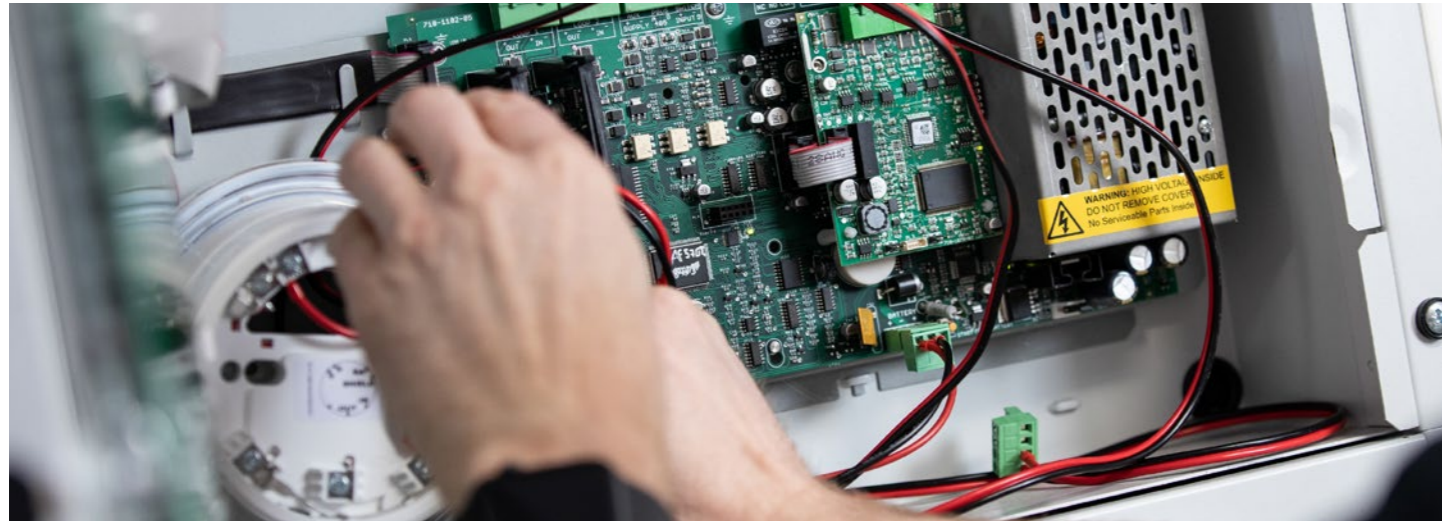
- Virtual panel display supports remote interrogation
- Direct USB/RS232 or remote modem/IP connection
- Real-time status information and control
- Downloadable event log



Flash Programmer PC-Net-014

- On-board micro-controller can be programmed in the field by a suitably qualified engineer
- To be used with all Windows™ Operating systems
- Programming via a USB/RS232 connection
- Used for simple panel software updates including language variant





Custom-Built Panels

AdSpecials

Advanced fire panels designed and manufactured to your specifications.

When you're facing a complex fire protection challenge, our AdSpecials team will work with you to design and manufacture customised fire panels, control interfaces and enclosures to meet the needs of your site.

The scope of customisation ranges from simple colour coordination to fully bespoke panel housings that offer environmental protection and specialist control and indication.



Contact us on 0345 8947000 or email enquiries@advancedco.com to discuss your requirements

Technical Support

Advanced360*

Highly rated customer support. Available by telephone and online.

When you set up an Advanced360 account, you gain access to a host of helpful advice and support.

An account also gives you access to a wealth of online information, from 'how to' videos to datasheets and detailed product manuals. And everyone with an Advanced360 account can benefit from our dedicated monthly newsletter, packed with useful hints and tips.

Services include:

- **Technical support** – available by phone and online from one of our experienced technical support engineers
- **Support history** – open and view your live support tickets and see your full support history – enabling you to refer back to previous advice where required



- **Training** – view and book training slots (direct customers only), and download your training certificates at any time
- **Software** – download software and save your software packages by installation/site
- **Literature** – download manuals, specifications, approved partner certificates, technical information and more
- **Warranty certificates** – download warranty certificates for your sites.



Sign up now at advancedco.com

Axis^{EN} Parts List

Product Code	Description
1-Loop Panels	
Axis-5101	1-Loop Fire Panel (Small Enclosure)
Axis-5101M	1-Loop Fire Panel (Medium Enclosure)
Axis-5101L	1-Loop Fire Panel (Large Enclosure)
Axis-5101D	1-Loop Fire Panel (Deep Enclosure)
Axis-5101R	1-Loop 19" Rack Mount FACP

2-Loop Panels	
Axis-5201	1-2 Loop Fire Panel c/w 1 Loop Card (Medium Enclosure)
Axis-5201L	1-2 Loop Fire Panel c/w 1 Loop Card (Large Enclosure)
Axis-5201D	1-2 Loop Fire Panel c/w 1 Loop Card (Deep Enclosure)
Axis-5201R	1-2 Loop 19" Rack Mount FACP c/w 1 Loop Card
Axis-5202	1-2 Loop Fire Panel c/w 2 Loop Cards (Medium Enclosure)
Axis-5202L	1-2 Loop Fire Panel c/w 2 Loop Cards (Large Enclosure)
Axis-5202D	1-2 Loop Fire Panel c/w 2 Loop Cards (Deep Enclosure)
Axis-5202R	1-2 Loop 19" Rack Mount FACP c/w 2 Loop Cards

4-Loop Panels	
Axis-5401	1-4 Loop Fire Panel c/w 1 Loop Card (Large Enclosure)
Axis-5401D	1-4 Loop Fire Panel c/w 1 Loop Card (Deep Enclosure)
Axis-5401E	1-4 Loop Fire Panel c/w 1 Loop Card (ext. Enclosure)
Axis-5401R	1-4 Loop 19" Rack Mount FACP c/w 1 Loop Card
Axis-5402	1-4 Loop Fire Panel c/w 2 Loop Cards (Large Enclosure)
Axis-5402D	1-4 Loop Fire Panel c/w 2 Loop Cards (Deep Enclosure)
Axis-5402E	1-4 Loop Fire Panel c/w 2 Loop Cards (ext. Enclosure)
Axis-5402R	1-4 Loop 19" Rack Mount FACP c/w 2 Loop Cards
Axis-5403	1-4 Loop Fire Panel c/w 3 Loop Cards (Large Enclosure)
Axis-5403D	1-4 Loop Fire Panel c/w 3 Loop Cards (Deep Enclosure)
Axis-5403E	1-4 Loop Fire Panel c/w 3 Loop Cards (ext. Enclosure)
Axis-5403R	1-4 Loop 19" Rack Mount FACP c/w 3 Loop Cards
Axis-5404	1-4 Loop Fire Panel c/w 4 Loop Cards (Large Enclosure)
Axis-5404D	1-4 Loop Fire Panel c/w 4 Loop Cards (Deep Enclosure)
Axis-5404E	1-4 Loop Fire Panel c/w 4 Loop Cards (ext. Enclosure)
Axis-5404R	1-4 Loop 19" Rack Mount FACP c/w 4 Loop Cards

8-Loop Panels	
Axis-5802	2-8 Loop Fire Panel c/w 2 Loop Cards. Standard Network
Axis-5803	2-8 Loop Fire Panel c/w 3 Loop Cards. Standard Network
Axis-5804	2-8 Loop Fire Panel c/w 4 Loop Cards. Standard Network
Axis-5805	2-8 Loop Fire Panel c/w 5 Loop Cards. Standard Network
Axis-5806	2-8 Loop Fire Panel c/w 6 Loop Cards. Standard Network
Axis-5807	2-8 Loop Fire Panel c/w 7 Loop Cards. Standard Network
Axis-5808	2-8 Loop Fire Panel c/w 8 Loop Cards. Standard Network
Axis-5802/FT	2-8 Loop Fire Panel c/w 2 Loop Cards. Fault-Tolerant Network
Axis-5803/FT	2-8 Loop Fire Panel c/w 3 Loop Cards. Fault-Tolerant Network
Axis-5804/FT	2-8 Loop Fire Panel c/w 4 Loop Cards. Fault-Tolerant Network
Axis-5805/FT	2-8 Loop Fire Panel c/w 5 Loop Cards. Fault-Tolerant Network
Axis-5806/FT	2-8 Loop Fire Panel c/w 6 Loop Cards. Fault-Tolerant Network
Axis-5807/FT	2-8 Loop Fire Panel c/w 7 Loop Cards. Fault-Tolerant Network
Axis-5808/FT	2-8 Loop Fire Panel c/w 8 Loop Cards. Fault-Tolerant Network

Remote Terminals	
MX-5010	Remote Display Terminal (RDT)
MX-5010/FT	Remote Display Terminal (RDT) Fault-Tolerant
MX-5020	Remote Control Terminal (RCT) – Small
MX-5020/FT	Remote Control Terminal (RCT) Fault-Tolerant – Small
MX-5030	Remote Control Terminal (RCT) – Large
MX-5030/FT	Remote Control Terminal (RCT) Fault-Tolerant – Large

Product Code	Description
TouchControl	
TOUCH-10	Touchscreen Terminal (Standard Network)
TOUCH-10/FT	Touchscreen Terminal (Fault-Tolerant Network)
TOUCH-10-SBB	Touchscreen Terminal – Surface Back Box

Key Switches	
MXP-511 *	Access Enable Key Switch
MXP-516 *	2-Position Key Switch (Trapped)
MXP-517 *	2-Position Key Switch (Untrapped)
MXP-515 *	3-Position Key Switch (Untrapped All Positions)
MXP-515T *	3-Position Key Switch (Key-Free in Centre Position Only)
MXP-519 *	2-Position Key Switch (Mom – Trapped)
* Add F for Fitted	

Printers	
MXP-512 *	Printer Assembly
MXS-509	Spare Paper Roll for Mxp-512 Printer
* Add F for Fitted	

AlarmCalm	
MXP-541V-002	AlarmCalm Button with Buzzer

Interfaces	
MXP-510-BX	BMS / Graphics I/F (Boxed)
MXP-510-BX/FT	BMS / Graphics I/F (Boxed) Fault-Tolerant
MXP-510	BMS / Graphics I/F (Card Only)
MXP-510/FT	BMS / Graphics I/F (Card Only) Fault-Tolerant
MXP-554-BX	IP Gateway (Boxed)
MXP-554-BX/FT	IP Gateway (Boxed) Fault-Tolerant
MXP-554	IP Gateway (Card Only)
MXP-554/FT	IP Gateway (Card Only) Fault-Tolerant
MXP-547 *	ESPA Pager Interface
MXP-547-BX	ESPA Pager Interface (Boxed)
MXP-642	Commander- BACnet / Modbus (IP) Interface (Standard/Basic) **
MXP-642C	Commander- BACnet / Modbus (IP) Interface (Configured) **
23-PSU/250	Power Supply for Commander 12VDC 2.5A

Modem Cards	
MXP-528 *	Modem Card (24V)
MXP-028-BX	ModemCard (24V) Boxed
* Add F for Fitted	

PENN	
MXP-545	PENN (Standard Network)
MXP-545/FT	PENN (Fault-Tolerant Network)

Peripherals	
MXP-502	Loop Driver Card
MXP-503 *	Network Card – Standard
MXP-509 *	Network Card – Fault Tolerant
MXP-501	Remote Battery Temperature Sensor
MXP-505	Sounder Active EOL (Part 13)
MXP-506	Routing Termination Card
MXP-507 *	2-way Relay Card
MXP-532 *	Routing/Protection Interface
MXP-536 *	P-BUS 8-way Conventional Zone Card
MXP-537 *	P-BUS 10-way Switch Input Card
MXP-544 *	P-BUS 8-way Relay Card
MXP-538	P-BUS 16-Way Switch (Form Factor) Module 16 Switches, 3 Integrated, Programmable LEDs per Switch (red, yellow, green)
MXP-539	P-BUS Mimic Driver Card (16 input + 48 output) 16 Switch Inputs & 48 LED Driver Outputs. Supports up to 5 Mxp-052 10 Relay Output Modules
MXP-034 *	Peripheral Bus – 4-way Sounder Cards
MXP-034-BXP	Peripheral Bus – 4-way Sounder Card with 4A PSU (boxed)
MXP-035 *	Peripheral Bus – 4-way Relay Card
MXP-035-BXP	Peripheral Bus – 4-way Relay Card with 1.5A PSU (boxed)
MXP-053	2-way Input Stretch / Latch Module

* Add F for Fitted

Product Code	Description
Network Boosters and Converters	
MXP-542	24VDC – 24VDC Converter / Isolator (for use with MXP-631 AdNet / Fibre Optic Convertors)
MXP-030	Standard Network Booster/Isolator (DIN-Rail Module)
MXP-631-MM	Ad-Net / Fibre Optic Converter Multi-Mode
MXP-631-SM	Ad-Net / Fibre Optic Converter Single-Mode

Mimic Driver Cards, Indicators and Network I/O Controllers	
MXP-020-100	100 way Remote LED Mimic Driver (Unboxed)
MXP-020-100/FT	Fault Tolerant 100-way Remote LED Mimic Driver (Unboxed)
MXP-045	50-way Network I/O Controller (Unboxed)
MXP-045/FT	50-way Fault-Tolerant Network I/O Controller (Unboxed)
MXS-026	High Intensity Red LED & 600mm Lead for Mxp-020 / 027 & 045
MXS-026-YEL	High Intensity Yellow LED & 600mm Lead for Mxp-020 / 027 & 045
MXS-026-GRN	High Intensity Green LED & 600mm Lead for Mxp-020 / 027 & 045
MXP-052	Mimic-Driven 10-way Relay Output Card
MXP-052-DIN	Mimic-Driven 10-way Relay Output Card in Din-Rail Carrier
MXS-031-2T	2-Position Key Switch Trapped for Mxp-045
MXS-031-2U	2-Position Key Switch Untrapped for Mxp-045
MXS-031-3U	3-Position Key Switch Untrapped for Mxp-045

LED Indication	
MXP-513M-050RD *	50 Zone FIRE (red)
MXP-513M-050RY *	25+25 Zone FIRE (Red) + FAULT (yellow)
MXP-513M-050YL *	50 Zone FAULT (yellow)
MXP-513L-050RD *	50 Zone FIRE (red)
MXP-513L-050RY *	25+25 Zone FIRE (red) + FAULT (yellow)
MXP-513L-050YL *	50 Zone FAULT (yellow)
MXP-513L-100RD *	100 Zone FIRE (red)
MXP-513L-100RY *	50+50 Zone FIRE (red) + FAULT (yellow)
MXP-513L-100YL *	100 Zone FAULT (yellow)
MXP-513L-200RY *	200 Zone (red/yellow)
MXP-513L-050CRY *	50 Zone Column Format (red/yellow)
MXP-513L-50CRYG *	50 Zone Column Format (30 x red/yellow – 20 x green/yellow)
MXP-513-050RD *	50 Zone FIRE (red)
MXP-513-050RY *	25+25 Zone FIRE (red) + FAULT (yellow)
MXP-513-050YL *	50 Zone FAULT (yellow)
MXP-513-100RD *	100 Zone FIRE (red)
MXP-513-100RY *	50+50 Zone FIRE (red) + FAULT (yellow)
MXP-513-100YL *	100 Zone FAULT (yellow)
MXP-513-200RY *	200 Zone (red/yellow)
MXP-513-050CRY *	50 Zone Column Format (red/yellow)
MXP-513-050CRYG *	50 Zone Column Format (30 x red/yellow – 20 green/yellow)
* Add F for Fitted	

Software	
PC-NET-005-L1	Graphical Control Software* Standard Version up to 3 Panels
PC-NET-005-L2	Graphical Control Software* Standard Version up to 15 Panels
PC-NET-005-L2P	Graphical Control Software* Premium Version up to 15 Panels
PC-NET-005-L3	Graphical Control Software* Standard Version up to 200 Panels
PC-NET-005-L3P	Graphical Control Software* Premium Version up to 200 Panels
PC-NET-005-SWM	Smart Watch Module
PC-NET-005-SWM6	Smart Watch Module (4-6 Panel)
PC-NET-005-SWM15	Smart Watch Module (7-15 Panel)
PC-NET-005-SWM4R	Smart Watch Module – 4 Inputs
PC-NET-005-SCU	Smart Cube Unit
PC-NET-05-L1R-L2R	Dongle Upgrade L1R – L2R
PC-NET-05-L2R-L3R	Dongle Upgrade L2R to L3R
PC-NET-05-L2R-L2P	Dongle Upgrade L2R to L2P
PC-NET-05-L2P-L3P	Dongle Upgrade L2P to L3P
PC-NET-05-L3R-L3P	Dongle Upgrade L3R to L3P

Product Code	Description
Cables	
UP-001	RS232 9-way to 3-way Plug In Connector (Upload/Download Lead)
UP-006	USB Upload/Download Lead for Config Software

Flushing Bezels	
MXM-501	Semi-Flushing Bezel (Small Enclosure)
MXM-502	Semi-Flushing Bezel (Medium Enclosure)
MXM-503	Semi-Flushing Bezel (Large/Deep Enclosure)
MXM-536	Semi-Flushing Bezel (ext. Enclosure)
MXM-509	Semi-Flushing Bezel – MX-5030 RCT – Large
MXM-521	Semi-Flushing Bezel – MX-5010 / 5020

Plexi-Glass Steel (Lexan) Door – Retrofit	
MXM-508	Glazed Door Kit (Medium encl)
MXM-508Z	Glazed Door Kit (Double Aperture) (Medium Enclosure)
MXM-507	Glazed Door Kit (Large Enclosure)
MXM-507Z	Glazed Door Kit with Double Aperture (Large Enclosure)
MXM-538-D1	Glazed Door Kit with Zone Aperture (ext. Enclosure)
MXM-538-D2	Glazed Door Kit with 2 x Glazed Apertures (ext. Enclosure)
MXM-538-D3	Glazed Door Kit with Mimic Aperture (ext. Enclosure)
MXS-505	Spare Key – Glazed Door

Spares	
MXS-501V	Spare Single Loop Base Card c/w PSU (No Loop Cards)
MXS-502V	Spare Two Loop Base Card c/w PSU (No Loop Cards)
MXS-503V	Spare Four Loop Base Card c/w PSU (No Loop Cards)
MXS-504	Spare Display Card
MXS-511	Spare Access Enable Key Switch (Lorlin style)
MXS-516	Spare 2-Position Key Switch – Trapped (Lorlin style)
MXS-517	Spare 2-Position Key Switch – Un-trapped (Lorlin style)
MXS-511-KEY	Spare MXP-511 Access Enable Key
MXS-011	Spare Panel Door Key
MXS-013	Spare Panel Lock and Key
MXS-518	MX5000 Panel Spares Kit & Battery Leads
MXS-519	MX5000 Rack-Mount Spares Kit & Battery Leads
MXS-520	MX5000 Remote Terminal Spares Kit
MXS-521	MX5000 Spare Battery Leads
MXS-522	MX5000 Rack-Mount Battery Leads
MXS-5-FP-S	Spare Fascia Plate and Membrane
MXS-5-FP-ML	Spare Fascia Plate and Membrane

Axis^{EN} Parts List

Product Code	Description
Enclosures	
MXM-504	Termination Enclosure (Medium Enclosure)
MXM-505	Termination Enclosure (Large Enclosure)
MXM-506	Termination Enclosure (Deep Enclosure)
MXM-516	18Ah Battery / Utility Enclosure (Medium Enclosure)
MXM-517	18Ah Battery / Utility Enclosure (Large Enclosure)
MXM-518	Utility Enclosure (Deep Enclosure)
MXM-519	Chassis Mounting Plate for Utility Enclosure (3 cards)
MXM-546	Battery (45Ah) Enclosure (Deep Enclosure)
MXM-530	Cable Clamp
MXM-531	Document Enclosure (Medium Enclosure)
MXM-532	Document Enclosure (Large Enclosure)
MXM-533	Modem/ESPA/BMS Interface Enclosure
MXM-522-BB	Spare Back Box (Small Enclosure)
MXM-522-D1	Spare Door (Small Enclosure)
MXM-522-CP	Spare Chassis Mtg Plate (Small Enclosure)
MXM-523-BB	Spare Back Box (Medium Enclosure)
MXM-523-D1	Spare Door (Medium Enclosure)
MXM-523-D2	Spare Door (c/w Zone Aperture) (Medium Enclosure)
MXM-523-CP	Spare Chassis Mtg Plate (Medium Enclosure)
MXM-524-BB	Spare Back Box (Large Enclosure)
MXM-524-D1	Spare Door (Large/Deep Enclosure)
MXM-524-D2	Spare Door (c/w Zone Aperture) (Large/Deep Enclosure)
MXM-524-D3	Spare Door (c/w 2 x Switch Apertures) (Large/Deep Enclosure)
MXM-524-D4	Mimic Door with Single Aperture (Large/Deep Enclosure)
MXM-524-D5	Blank Door (Large/Deep Enclosure)
MXM-524-CP	Spare Chassis Mtg Plate (Large/Deep Enclosure)
MXM-525-BB	Spare Back Box (Deep Enclosure)
MXM-537-BB	Spare Back Box (ext. Enclosure)
MXM-537-D1	Spare Door (ext. Enclosure)
MXM-537-D2	Spare Door with Mimic Aperture (ext. Enclosure)
MXM-537-BP	Blank Plate for Zone LED Aperture (ext. Enclosure)
MXM-543-BB	Spare Back Box (MX-5010/5020)
MXM-543-D1	Spare Panel Cover (MX-5010/5020)
MXM-543-D2	Spare Panel Cover + KS Aperture (MX-5010/5020)
MXM-544-BB	Spare Back Box (MX-5030)
MXM-544-D1	Spare Panel Cover (MX-5030)
MXM-544-D2	Spare Panel Cover + KS Aperture (MX-5030)

Product Code	Description
Special Finishes	
MXM-501-SSB	Semi-Flushing Bezel (Small Enclosure) – Stainless Steel Brushed
MXM-501-SSM	Semi-Flushing Bezel (Small Enclosure) – Stainless Steel Mirrored
MXM-502-SSB	Semi-Flushing Bezel (Medium Enclosure) – Stainless Steel Brushed
MXM-502-SSM	Semi-Flushing Bezel (Medium Enclosure) – Stainless Steel Mirrored
MXM-503-SSB	Semi-Flushing Bezel (Large/Deep Enclosure) – Stainless Steel Brushed
MXM-503-SSM	Semi-Flushing Bezel (Large/Deep Enclosure) – Stainless Steel Mirrored
MXM-521-SSB	Semi-Flushing Bezel (MX-5010/5020) – Stainless Steel Brushed
MXM-521-SSM	Semi-Flushing Bezel (MX-5010/5020) – Stainless Steel Mirrored
MXM-509-SSB	Semi-Flushing Bezel (MX-5030) – Stainless Steel Brushed
MXM-509-SSM	Semi-Flushing Bezel (MX-5030) – Stainless Steel Mirrored
MXM-543-D1-SSB	Panel Cover (MX-5010/5020) – Stainless Steel Brushed
MXM-543-D1-SSM	Panel Cover (MX-5010/5020) – Stainless Steel Mirrored
MXM-543-D2-SSB	Panel Cover + KS Aperture (MX-5010/5020) – Stainless Steel Brushed
MXM-543-D2-SSM	Panel Cover + KS Aperture (MX-5010/5020) – Stainless Steel Mirrored
MXM-544-D1-SSB	Panel Cover (MX-5030) – Stainless Steel Brushed
MXM-544-D1-SSM	Panel Cover (MX-5030) – Mirror Polished
MXM-544-D2-SSB	Panel Cover + KS Aperture (MX-5030 RCT) – Stainless Steel Brushed
MXM-544-D2-SSM	Panel Cover + KS Aperture (MX-5030 RCT) – Stainless Steel Mirrored
MXM-522-BB-SSB	Spare Back Box (Small Enclosure) for use w SS Door (MW334E)
MXM-522-D1-SSB *	Spare Door (Small Enclosure) – Stainless Steel Brushed
MXM-522-D1-SSM	Spare Door (Small Enclosure) – stainless steel mirrored
MXM-523-BB-SSB	Spare Back Box (Medium Enclosure) for use w SS Door (MW334E)
MXM-523-D1-SSB *	Spare Door (Medium Enclosure) – Stainless Steel Brushed
MXM-523-D1-SSM	Spare Door (Medium Enclosure) – Stainless Steel Mirrored
MXM-523-D2-SSB *	Spare Door c/w Zone Aperture (Medium Enclosure) – Stainless Steel Brushed
MXM-523-D2-SSM	Spare Door c/w Zone Aperture (Medium Enclosure) – Stainless Steel Mirrored
MXM-524-BB-SSB	Spare Back Box (Large Enclosure) for use w SS Door (MW334E)
MXM-525-BB-SSB	Spare Back Box (Deep Enclosure) for use w SS Door (MW334E)
MXM-524-D1-SSB *	Spare Door (Large/Deep Enclosure) – Stainless Steel Brushed
MXM-524-D1-SSM	Spare Door (Large/Deep Enclosure) – Stainless Steel Mirrored
MXM-524-D2-SSB *	Spare Door c/w Zone Aperture (Large/Deep Enclosure) – Stainless Steel Brushed
MXM-524-D2-SSM	Spare Door c/w Zone Aperture (Large/Deep Enclosure) – Stainless Steel Mirrored

* Add F for Fitted (includes silver back box and hinge strip)

EN54-4 Power Supplies	
MXP-549	1.5A 24V PSE & Charger (Boxed – 7Ah Battery Capacity)
MXP-549-12V	1.5A 12V PSE & Charger (Boxed – 7Ah Battery Capacity)
MXP-550	3A 24V PSE & Charger (Boxed – 17Ah Battery Capacity)
MXP-550/D	3A 24V PSE & Charger (Boxed – 38Ah Battery Capacity)
MXP-551	5A 24V PSE & Charger (Boxed – 17Ah Battery Capacity)
MXP-551/D	5A 24V PSE & Charger (Boxed – 38Ah Battery Capacity)
MXP-049	1.5A 24V PSU & Charger (Utility Enc. – 7Ah Battery Capacity)
MXP-050-001	3A 24V PSU & Charger (Utility Enc. – 7Ah Battery Capacity)
MXP-050-002	3A 24V PSU & Charger (Utility Enc. – 17Ah Battery Capacity)
MXP-051	5A 24V PSU & Charger (Utility Enc. – 17Ah Battery Capacity)
MXP-051/D	5A 24V PSU & Charger (Utility Enc. – 38Ah Battery Capacity)

Product Code	Description
Rack Mount LED Indication	
MXP-513R-050RD	4U LED Card – 50 Zone FIRE (Red)
MXP-513R-050RY	4U LED Card – 50 Zone FIRE/FAULT (Red/Yellow)
MXP-513R-050YL	4U LED Card – 50 Zone FAULT (Yellow)
MXP-513R-100RD	4U LED Card – 100 Zone FIRE (Red)
MXP-513R-100RY	4U LED Card – 100 Zone FIRE/FAULT (Red/Yellow)
MXP-513R-100YL	4U LED Card – 100 Zone FAULT (Yellow)
MXP-513R-200RY	4U Programmable LED Card – 200 Zone (Red/Yellow)
MXP-513R-050CRY	4U Programmable LED Card – 50 Zone Column Format (Red/Yellow)
MXP-513R-050CRYG	4U Programmable LED Card 50 Zone Column Format (30 x red/yellow – 20 x Green/Yellow)

Rack Mount Enclosures	
MXM-510-16U	IP55 19" Rack Mount Enclosure – 16U High
MXM-510-20U	IP55 19" Rack Mount Enclosure – 20U High
MXM-510-KL	CAM Key-Lock Kit for Outer Door
MXM-510-BS	Battery Shelf
MXM-510-BS1	Battery Shelf Lower
MXM-510-CP	Chassis Plate
MXM-511-1U	Blanking Plate – 1U
MXM-511-1U-TOP	Blanking Plate – 1U-TOP
MXM-511-2U	Blanking Plate – 2U
MXM-511-3U	Blanking Plate – 3U
MXM-511-4U	Blanking Plate – 4U
MXM-511-5U	Blanking Plate – 5U
MXM-511-6U	Blanking Plate – 6U
MXM-511-7U	Blanking Plate – 7U
MXM-511-8U	Blanking Plate – 8U
MXM-512	Blanking LED Plate – 4U
MXM-513-BB	Back Box – 6U
MXM-513-BP	Switch / LED Blank Plate – 6U
MXM-513-D1	Door D1 Blank – 6U
MXM-513-D2	Door D2 LED – 6U
MXM-513-D3	Door D1 c/w Aperture – 6U
MXM-513-FP	Fascia Plate Blank – 6U
MXM-513-MF	Switch / LED Mounting Frame – 6U
MXM-514-BB	Back Box – 8U
MXM-514-D1	Door D1 c/w Aperture – 8U
MXM-514-FP	Fascia Plate Blank – 8U
MXM-515-6U	Chassis Plate – 6U
MXM-515-8U	Chassis Plate – 8U
MXM-535-D1	13U Hinged Door (accepts 9 x MXP-538 Switch Cards or Blank Plates)

Intelligent Detectors and Bases	
AXIS-OPX	Axis EN Optical Detector with Isolator
AXIS-OHX	Axis EN Multi-Detector with Isolator (Optical/Heat)
AXIS-HTX	Axis EN Heat Detector with Isolator
AXIS-OP	Axis EN Optical Detector
AXIS-OH	Axis EN Multi-Detector (Optical/Heat)
AXIS-HT	Axis EN Heat Detector
AXIS-MB	Axis Mounting Base

Duct Detectors	
AXIS-DDH	Duct Detector Housing with Axis Mounting Base
20-DDH-ST0.6-ADV	0.6m Sampling Tube
20-DDH-ST1.5-ADV	1.5m Sampling Tube
20-DDH-ST2.8-ADV	2.8m Sampling Tube
20-DDH-BRA-ADV	Duct Detector Bracket

Intelligent Call Points	
AXIS-CP	Axis EN Manual Call Point (Red)
AXIS-CP/Y	Axis EN Manual Call Point (Yellow)
AXIS-WCP	Axis EN Waterproof Manual Call Point (Red)
AXIS-CPKEY	Spare Reset Key for Axis EN Call Point
AXIS-CPCI	Transparent Cover for Axis-CP (No Text)
AXIS-CPFMP	Wall Flush Mount Plate with external Frame (Red) for Axis-CP

Product Code	Description
Sounders	
AXIS-S2MB	Axis EN Sounder Base, Intelligent
AXIS-S2AMB	Axis EN Slave Sounder Base
AXIS-CWS	Conventional Wall Sounder (Red)
AXIS-CWS/W	Conventional Wall Sounder (White)
AXIS-WSM	Intelligent Sounder Interface Module

Sounder-Beacons	
AXIS-SV2MB	Axis EN Sounder Beacon Base, Intelligent (White LED)
AXIS-SV2MBRF	Axis EN Sounder Beacon Base, Intelligent (Red LED)
AXIS-SV2AMB	Axis EN Slave Sounder Beacon Base (White LED)
AXIS-CWSV	Conventional Wall Sounder Beacon (Red)
AXIS-CWSV/W	Conventional Wall Sounder Beacon (White)
20-CBE1002	Conventional VAD [EN54-23] (Requires Base)

Single Input/Output/Relay Modules	
20-VM100-ADV	Monitored Input Module
20-VM100-ADV	Mini Monitored Input Module
20-VMC100-ADV	Monitored Output Module
20-VMC100-ADV	Mini Monitored Output Module
20-VMC120-ADV	Relay Output Module
20-VMC120-ADV	Mini Relay Output Module

Multi Input/Output/Relay Modules	
20-VMIC100-ADV	Monitored Input / Output Module
20-VMIC100-ADV	Mini Monitored Input / Output Module
20-VMIC120-ADV	Monitored Input / Relay Output Module
20-VMIC120-ADV	Mini Monitored Input / Relay Output Module
20-VMIC404-ADV	4 Input / 4 Relay Output Module
20-VMIC404-ADV	4 Input / 4 Relay Output Module DIN Rail Mount
20-VMIC602-ADV	6 Input / 2 Relay Output Module
20-VMIC422-ADV	4 Input / 2 Relay Output / 2 Monitored Output Module
20-VMCZ100-ADV	Conventional Zone Module

Accessories	
AXIS-PU	Axis Programming Unit
AXIS-WP	Silicon Base Gasket
20-F100-ADV	Remote Indicator
20-WHCP-BBC	Weatherproof Call Point Housing with Clear Back Box
20-WHCP-BBR	Weatherproof Call Point Housing with Red Back Box

Wireless Detectors	
AXIS-TOP	Axis Wireless Optical Detector
AXIS-THT	Axis Wireless Heat Detector
AXIS-TOH	Axis Wireless Multi-Detector (Optical/Heat)

Wireless Call Point	
AXIS-TCP	Axis Wireless Call Point (Red)

Wireless Sounders & Sounder-Beacons	
AXIS-TSMB	Axis Wireless Base Sounder
AXIS-TSMB	Axis Wireless Base Sounder VAD (White LED)
AXIS-TSMBRF	Axis Wireless Base Sounder VAD (Red LED)
AXIS-TWSM	Axis Wireless Wall Sounder Module

Wireless Modules	
AXIS-TMT	Axis Wireless Translator
AXIS-TME	Axis Wireless Expander
AXIS-TMI	Axis Wireless Input Module
AXIS-TMO	Axis Wireless Battery Output Module

Wireless Accessories	
AXIS-TSK	Axis Wireless Survey Kit
AXIS-LID200/R	Cover for Axis Wireless Sounder Base Red (Pack of 5)
AXIS-LID200/W	Cover for Axis Wireless Sounder Base White (Pack of 5)



Email: enquiries@advancedco.com
Web: www.advancedco.com

 @advancedlive

 Advanced

 Advanced Fire

 **NBS Source**
PARTNER

Find us on NBS National BIM Library
www.nationalbimlibrary.com/advanced-electronics-ltd

Axis EN, AxisGo and all other Advanced product brands are trademarks of Advanced Electronics Ltd. All rights reserved.



A **Halma** company