



Mx^{*}Pro⁵

The powerful, versatile fire panel
for complete peace of mind





Advanced Performance. Wireless Versatility.

Compatible with leading detector protocols

Looking for a flexible range of wireless fire safety solutions you can trust?

Look no further than Advanced.

Whether you need a fast-fit fire system upgrade, wired and wireless hybrid adaptability, or versatile fire panels compatible with the leading wireless protocols*, Advanced brings you fire safety peace of mind.

Creating a safer future

*Compatible with Apollo Reach, Apollo Xpander, Argus Sagittarius, EMS Firecell, Eurotech Sygno-fi, Hochiki Ekho and Hyfire Taurus.

Contents

| | |
|------------------------------------|----|
| About Advanced | 4 |
| The Powerful, Versatile Fire Panel | 6 |
| MxPro 5 System Diagram | 9 |
| MxPro 5 Panels | 10 |
| MxPro 5 Features | 12 |
| TouchControl | 14 |
| Complete False Alarm Management | 15 |
| Advanced Networking | 16 |
| Fire Panel Software | 17 |
| Technical Support | 18 |
| MxPro 5 Parts List | 19 |



Advanced – Made in the UK. Trusted around the world

At Advanced, we're committed to creating a safer future. We deliver fire protection and life safety solutions that protect people and property in more than 80 countries across the globe.

Our products are shaped by decades of research and development expertise as well as ongoing investment in new technologies. This ensures they provide years of high performance and reliability – for ultimate peace of mind.

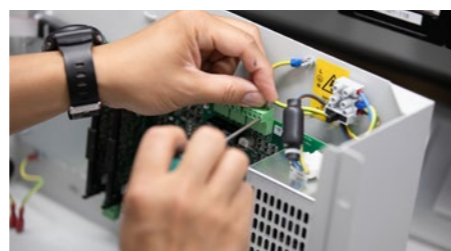
Everything we deliver is rigorously tested and approved to exacting quality standards – which is why Advanced products are trusted by customers the world over and synonymous with quality, performance and ease of use.



Advanced Headquarters, Newcastle, UK

We understand that few fire protection challenges are the same, so as well as our mass-customised ranges, we also offer fully-customised solutions. This flexibility gives you complete control over the functions, format and finish of products to suit your site's unique specification.

We are dedicated to providing excellent service and have an international network of offices and agents to help you access sales support with ease – wherever you are in the world.



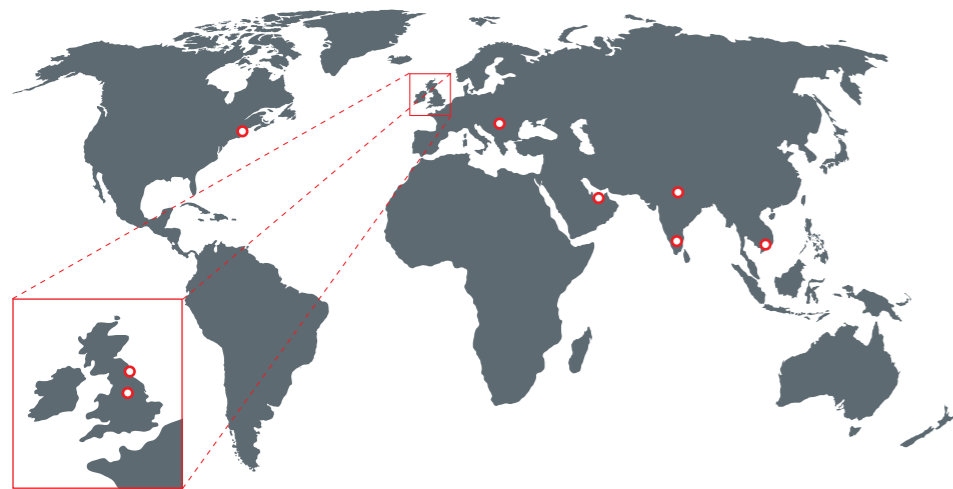
In addition, our training and technical services are free of charge to all our direct customers and consistently rated as excellent.

For added reassurance, Advanced is part of the safety sector of FTSE 100 company Halma plc. This global group of life-saving technology companies has a clear purpose to grow a safer, cleaner, healthier future for everyone, every day.

Advanced was named **Fire Safety Systems Manufacturer of the Year** at the Fire & Security Matters Awards 2022.



A Halma company



Durham Cathedral, Durham, UK



HMS Belfast, London, UK

MxPro⁵ protects...



London Underground, London, UK



22 Bishopsgate, London, UK



University of Edinburgh, Scotland, UK



King's Cross Western Concourse, London, UK

The Powerful, Versatile Fire Panel

MxPro⁵

1. Choose your panel
2. Choose your detector
3. Choose your installer

- gives you maximum freedom and flexibility, whilst delivering performance, quality and ease of use
- enables specifiers to match the best-performing panel with the most appropriate detector range for the site
- allows installers to work with easy-to-use fire alarm systems, free from restrictive agreements
- means that end users aren't tied to expensive maintenance contracts
- is a reliable, scalable solution, backed up by lifetime technical support
- includes intuitive programming, powerful networking, comprehensive cause and effect and unique diagnostic features that put you in complete control of your fire protection and provide that all-important peace of mind
- is fully approved to EN54 Parts 2, 4 and 13
- is designed to go anywhere you need high quality, reliable and easy-to-use fire detection and control, from mass transportation and industrial complexes to landmark developments, historic buildings and public services.



MxPro 5 fire panels have been certified by FM Approvals, enabling them to carry the FM APPROVED diamond, one of the most prestigious certification marks in the world.



Easy to install and use

MxPro 5 is built on Advanced's outstanding pedigree of fire alarm and detection experience, bringing you a range of EN54-approved fire panels that are simple to install, configure and use.

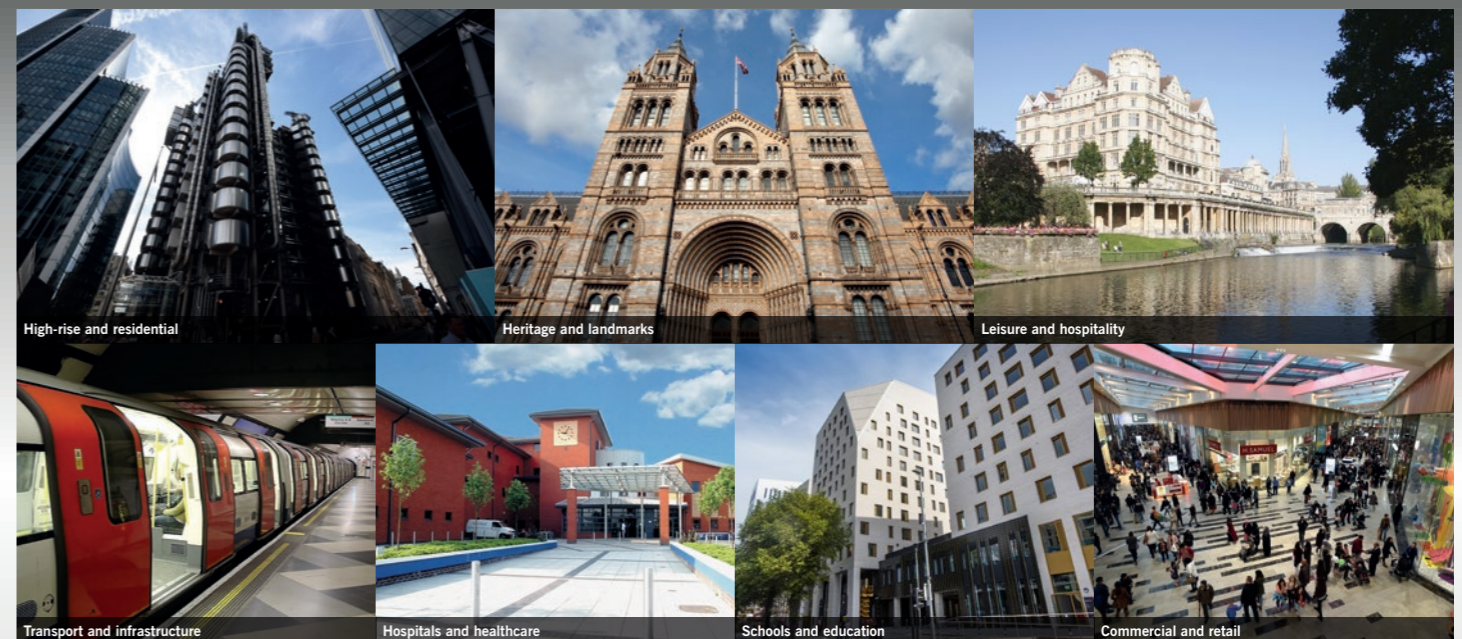
- Easy-fix removable chassis and in-built software make MxPro 5 fire panels quick and easy to set up
- Powerful networking, extensive configuration options and comprehensive cause and effect put you in complete control
- Intuitive controls and menus, with simple click-and-select programming, for simple & easy commissioning
- The panels support intelligent remote terminals, IP Gateway, I/O drivers and BMS interface, for integration with building management systems
- our highly-rated technical support team can help with advice, tips and training. We also have an extensive collection of 'how to' videos on our YouTube channel.



Scalable and versatile

We know that sites can expand, and fire protection requirements change and evolve over time. That's why we've designed MxPro 5 to be scalable and versatile, able to adapt as required with minimal fuss or disruption.

- Standalone one, two, four or eight loop formats so you can choose the panel size that meets your requirements and budget
- Remote display terminals available including TouchControl – our 10-inch touchscreen with interactive maps and zone plans for public reception areas
- Up to 254 devices per loop (depending on chosen protocol) and an overall capacity of over 200,000 devices per network
- Every panel is networkable with up to 200 network nodes and 2,000 fire detection zones
- Panels can be support wired and wireless loops, or a hybrid of both (depending on chosen protocol)
- Versatility includes a choice of leading detector partners – Apollo, Argus, Hochiki and Nittan.





Packed with premium features

Every MxPro 5 panel comes with a host of advanced features built in as standard, giving you peace of mind that you won't need to buy expensive add-ons in the future.

- Unique diagnostic features include 'scope on board' to provide readings on the panel from any loop, making it easy to identify and investigate any issues
- Network diagnostic tool prevents fires and faults from being transmitted across the network
- Built-in multimeter measures all voltages and currents across the system, so you can speed up the commissioning process by identifying voltage/current levels in real time
- Every panel includes AlarmCalm false alarm management software to help you minimise unwanted false alarms, with 200 programmable false alarm management areas per panel
- You can monitor the circuit from any panel or remote terminal and see a complete device history on every panel
- Standard peripherals include direct USB and RS232 PC connections, and peripheral expansion is built in for added peace of mind
- Modular in construction, with mass customisation options including the ability to programme your own company logo to appear on the fire panel screen
- 20 built-in, fully programmable LEDs as standard without the need to buy a separate LED zone card
- On-board or optional remote battery temperature sensor ensures optimum operational efficiency and life
- 4 programmable push buttons on the front of the panel for user customisation according to your fire system's needs
- 5,000 event and diagnostic, and 500 fire event log entries, for comprehensive tracking and auditing
- Timed enablement of isolated zones, input and output devices, to program and manage fire system response and reporting.



Powerful, flexible service reporting

Every MxPro 5 panel includes an inbuilt, easy-to-use, windows-based service tool which saves you time and money by providing easy, instant access to historic and real-time device data, and shows proof of servicing at a glance.

- Demonstrate proof of servicing, download service reports, inspect the device history and keep track of service schedules for safety audit compliance
- Customisable data filters make it easy to focus on potential trouble spots and ensure they're checked and tested during servicing
- Predict which devices are becoming contaminated so you can clean/replace them before they cause a false alarm
- Customise reports to show the data you need and export it as PDF, Excel or HTML files to prove compliance simply and efficiently.



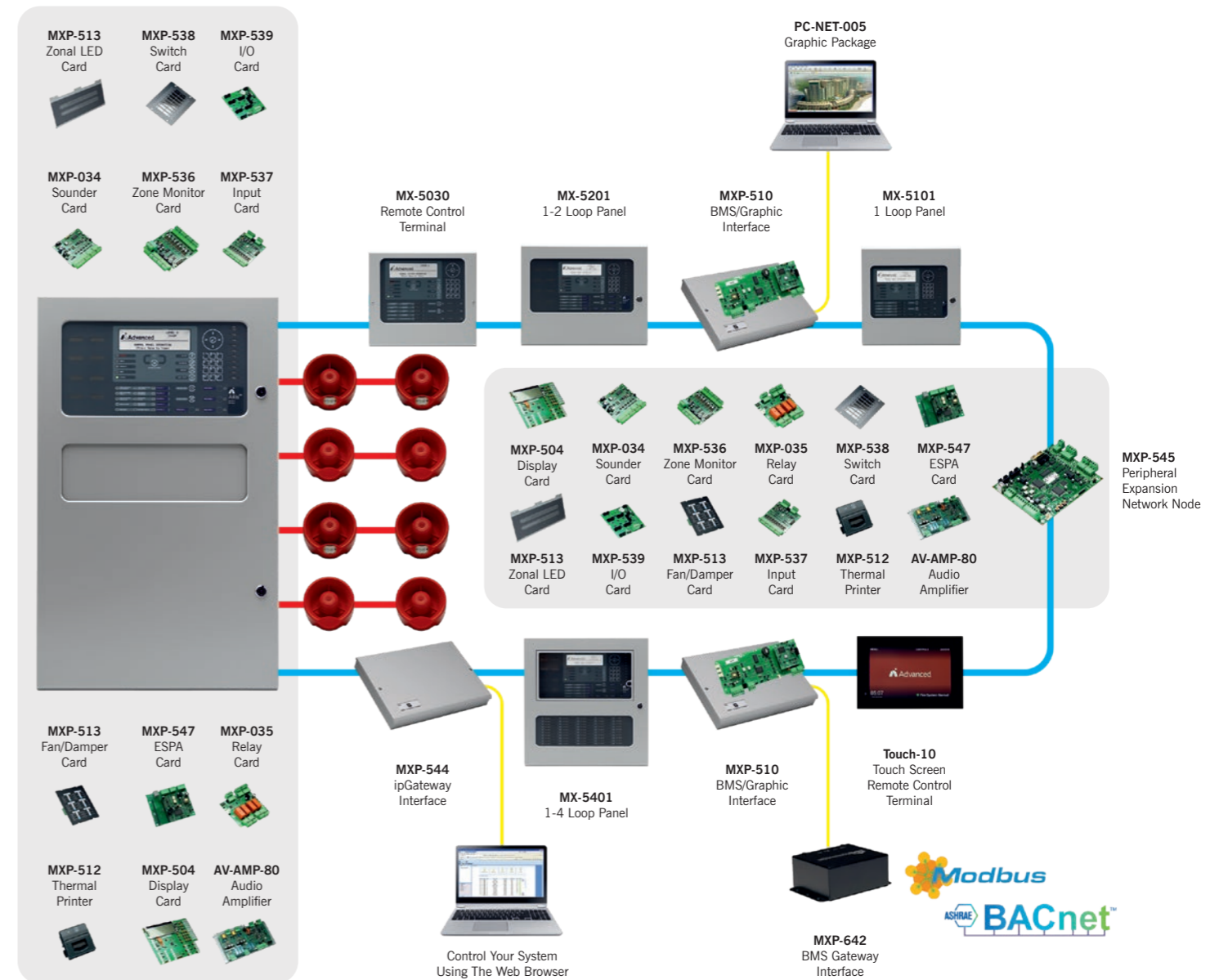
Why do I need Part 13?

Part 13 compliance ensures that a fire system will continue to perform to its maximum capability during a fire situation.

Increased current in alarm conditions combined with a high-resistance connection (e.g. an incorrectly tightened screw in a sounder base), could prevent the sounders and beacons from operating on what would have incorrectly appeared to have been an acceptable 'fault-free' installation.

Advanced's MxPro 5 is one of the few EN54 Part 13 approved panels available. Axis EN continuously monitors all transmission lines for compliance, checking and reporting faults every minute of every day.

MxPro⁵ System Diagram



Please note there is a maximum of 2 peripherals per panel.

MxPro 5 – 1 Loop



- Single loop
- Small enclosure
- Maximum 7Ah internal batteries
- 20 programmable LEDs
- Optional programmable key switch
- Programmable input
- Medium, large and deep enclosure options

MxPro 5 – 2 Loop



- One or two loops
- Medium enclosure
- Maximum 12Ah internal batteries
- Up to 50 additional programmable LEDs
- Up to 8 programmable key switches or 4 plus printer
- Plexi-glass door option
- Large and deep enclosure options

MxPro 5 – 4 Loop



- One to four loops
- Large enclosure
- Maximum 17Ah internal batteries
- Up to 200 additional programmable LEDs
- Up to 8 programmable key switches or 4 plus printer
- Plexi-glass door option
- Deep and extended enclosure options

MxPro 5 – 8 Loop



- Two to eight loops
- Extended enclosure
- Maximum 45Ah internal batteries
- Up to 200 additional programmable LEDs, 2 x switch cards or mimic
- Up to 8 programmable key switches or 4 plus printer
- Plexi-glass door and external battery box option

MxPro 5 – Integrated Peripheral Bus

- Integrated P-Bus as standard on all MxPro 5 panels
- Up to 32 expansion cards can be added to an MxPro 5 panel
- Peripheral expansion option cards include:
 - 4-way relay card
 - 4-way sounder card
 - 10-way monitored input card
 - 10-way relay card
 - Conventional zone card (8 class B or 4 class A zones + 3 programmable relays)
 - 16-way push button/48 LED card
 - 16-way input/48 output (direct drive LED outputs)
 - Fire and fault routing/protection card
 - Redundant controller

MxPro 5 – Remote Terminals

- Four types available including:
 - TouchControl touchscreen with active maps
 - Remote display terminal
 - Remote control terminal with additional mute, silence, reset and resound keys
 - Remote control terminal with additional LED status indication, four programmable push buttons, mute, silence, reset, resound, lamp test and evacuate keys
- Optional level 2 access enable key switch. (Not TouchControl)
- Integrated standard or fault-tolerant network interface with screen termination point
- Programmable display for up to 2,000 zones along with sector-based controls



MxPro 5 – Rack Mount

- Rack-mountable control panels
- Additional 16U and 20U high IP55 enclosures
- Rack-mount peripheral chassis plate, LED and switch card module options
- Dedicated mimic door option



Go

The powerful, flexible, single-loop fire panel

Designed to be fast to fit, quick to configure and easy to use, Go saves install time whilst bringing you complete peace of mind that your single-panel site has the highest levels of fire protection.

Offering cost-effective access to popular premium features from our MxPro 5 range in a simpler, non-networkable format, Go provides powerful protection for a wide range of smaller sites. Packed with future-proof technology and flexible features – including false alarm management, built-in zonal LEDs and a handy service tool – Go's ready to become your Go-to!

Creating a safer future

MxPro⁵ Features

| Hardware Features | |
|--|--|
| Display backlight | White backlit display Improved efficiency with programmable dimming options Software-driven contrast adjustment via menu |
| PC connections | USB, RS232 |
| Peripheral expansion bus | Built in as standard on all panels Extended range of P-Bus option cards |
| Wiring fault monitoring | EN54-2: Open circuit, short circuit EN54-13: Continuous checking for increases in resistance, (loose terminations), partial shorts etc. |
| Control keys | Mute, Silence, Reset, LED Test, Resound, Evacuate and dedicated More Alarms buttons on control panels and large repeater Configurable keypad repeat keys |
| Front panel push buttons | 4 programmable function buttons on control panels and large repeater |
| Battery charging | Charger current, voltage and temperature available from any display on a network Built-in or remote battery temperature sensor |
| Zone LEDs | 20 integral red LED indicators included as standard on control panels and large repeater Can be assigned to any fire zone or programmable for other uses Up to 200 additional LEDs with Large, Deep and Extended enclosures. (Up to 50 in Medium enclosure) Options include red, yellow and (bi-colour) red/yellow or green/yellow column format with slide-in labels |
| Programmable input | Dedicated monitored switch input as standard on all panels |
| Programmable key switch inputs | Built-in as standard on all panels |
| Printer | Optional on-board printer. No additional battery pack required. Integral paper feed button. Printer fault conditions displayed on panel, prints customer logo |
| Standards | EN54-2, 4 and 13 |
| Software Features | |
| Independent general event and fire event logs | Yes – on all panels and repeaters Any panel can be configured as a network-wide main event log |
| Event log entries | 5,000 + 500 fire Additional logging for investigation delays and any enable/disable actions |
| Timed disable options | Permanent or automatic timed re-enablement of any input or output device |
| Enable/disable inputs by zone | <ul style="list-style-type: none"> • All inputs • Selected inputs • Only automatic inputs • Only manual inputs • All other inputs |
| Enable/disable outputs | Disable by output purpose Configurable disable outputs menu options include: sounders, relays, beacons, fire routing, fault routing, fire protection, pager, all or selected Disablement of outputs across network configurable by sector mask |
| Real-time clock | Yes - no lithium battery required |
| Languages | Supports multiple different character sets (code pages) and languages |

| Network Features | |
|--|---|
| Max devices per network | 200,000 |
| Max nodes on network | 200 |
| Sectors | 200 |
| Maximum fire zones displayed | 2,000 on all panels |
| Programming Features | |
| Independent building areas for false alarm management | 201 areas per panel Local or global alarm acknowledgement facility |
| Zone LEDs | All LEDs fully programmable PC configuration presented graphically Primary/secondary activation |
| Buzzer options | Smart latch of faults Fault notification can resound daily Service option to inhibit by time clock |
| Programmable input actions | 22 – including new supervisory, fire routing and fire protection confirmed + alarm acknowledgement actions |
| Output purpose | Output purpose configurable |
| Output ringing styles | 40 – output activation priority configurable |
| Zone qualifiers | 24 categories of zone qualifiers |
| Logic statements | 1,500 logic lines – programmable options: <ul style="list-style-type: none"> • Inputs • Any 2 inputs • Zone qualifiers • Any 2 zones • General events • Time clocks |
| General events | 36 categories |
| Blocking rules | Programmable blocking rules – by general event or output groups |
| Service and Diagnostic Features | |
| Device history | For every device the time and date of the: <ul style="list-style-type: none"> • Last activation • Last test • Last disable • Last enable • Date created |
| On-board digital storage scope | Yes |
| View panel voltages and currents | Available from any MxPro 5 repeater or panel on the network |
| View panel status | View status of all panel circuits across network Firmware version of all internal hardware and peripheral devices can be viewed at the panel |
| Firmware updates | All hardware flash upgradable via panel USB or serial port |
| Detector status information | New warning state allows any devices nearing drift contamination limits to be identified during routine servicing before a fault level is reached |
| Service tool | Download device information Extract event log information Download device history View drift (contaminated) status of detectors Network simulation and test facility |



TouchControl

Easy, visual fire system control

TouchControl is Advanced's touchscreen remote control terminal and repeater.

Easily installed, its HD display enhances any architectural environment and takes system control and monitoring to the next level.

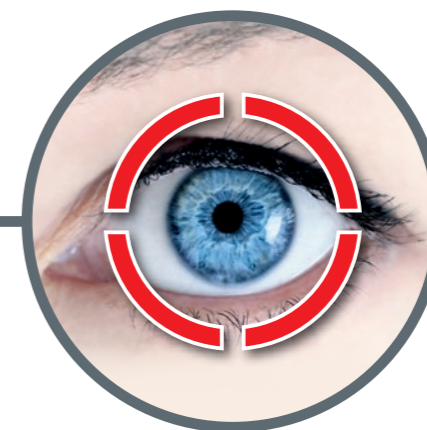
Features:

- **Attractive, low-profile HD display**
10" screen enhances prestigious environments
- **Easy slide-in installation**
Two-part, slide-in assembly for quick first fix and final install
- **Easily configured**
Fully active remote control terminal and network device almost immediately after installation
- **Interactive maps and zone plans**
Easily added, using any diagram via our MapApp
- **'At a glance' system status**
Unique interface allows easy monitoring and management of zones and devices
- **Complete control**
Three-level access to all the controls you'd find on an Advanced RCT via an easy-to-use interface
- **Customisable screen**
Choose from the preloaded background screens or add your own including installer logos. Run promotional presentations. Immediately reverts to fire use when system signal received

Contact us now for a demo by emailing enquiries@advancedco.com



Verification



Investigation



Reduction

AlarmCalm

Redline false alarms

Complete False Alarm Management

AlarmCalm uses fast hardware and powerful software to build a total solution to false alarms that's powerful and easy to configure.

The AlarmCalm button is a fully intelligent verification device that is installed on the loop and works alongside the AlarmCalm software to allow occupants to acknowledge a fire alarm signal locally, if they believe it has been falsely triggered.



Features:

- **Complete cause and effect**
In-depth control over alarm verification and investigation delays to outputs
- **Customised management for any site**
Divide your building(s) into 'building areas', each with quickly applied group or unique false alarm management settings. 200 building areas per panel or 40,000 per network
- **Unlimited points**
No restriction to the number of points in a building area and you can configure by point
- **Global acknowledgement**
Panel inputs can be programmed to manage verification and output delays
- **Full event log**
All verification and output delays recorded in panel event logs
- **Flexible verification**
Set verification by building area, day/night, on or off, change verification times, verification by second device or device mode change
- **Multiple verification inputs and outputs**
Inputs can include optical, heat and multisensors, callpoints and AlarmCalm button or other input modules. Outputs can be sounders, beacons and relays etc. Sounder ring styles can be configured
- **Failsafe operation**
Total control over verification times. You can only extend verification once. Set max number of areas in verification before full fire is signaled
- **Easy management of outputs**
Output delays are handled in exactly the same way as verifications, making setup very simple

Contact us now for a demo by emailing enquiries@advancedco.com

Advanced Networking

Our high-performance network technology works across the MxPro 5 range, delivering the easiest setup and best-performing fire panel networks available.

Easy connection

- Connect all MxPro 5 control panels, remote terminals and network peripherals together using fire-resistant, two-core cable
- Lower installation costs
- Caters for the smallest two-panel network through to the largest 200 panel, wide-area, networked system
- Simply add and connect a network card to any MxPro 5 control panel or remote terminal

Peer-to-peer system

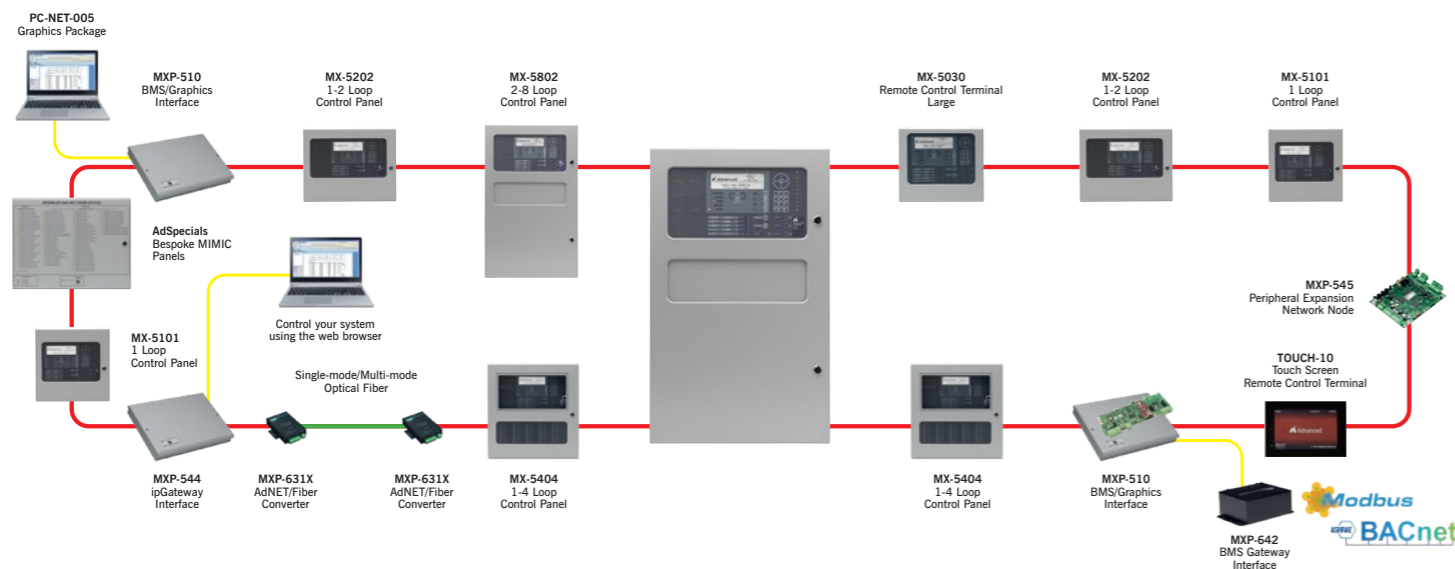
- Does not rely on a single 'master' panel to function
- Information from any input or output device can be passed over the network and displayed on any MxPro 5 control panel or remote terminal
- Details include fire, general alarm, pre-alarm, fault, control inputs and disablement

Zoning

- Networked systems can share up to 2,000 zones
- Autolearning the devices, adding text and assigning zone numbers is easy
- All other nodes on the network are instantly aware of a panel as soon as it is given a valid network node address

Diagnostic and status information

- All panels provide valuable diagnostic and status information and have the facility to prevent the transmission of fires or faults during commissioning
- DynamixTools software enables easy configuration of complicated cause and effect for more complex systems
- All configuration data is contained within one user-friendly network configuration file



| Type of network | Standard | Fault tolerant |
|---|--|--|
| Typical use | Sites where one panel per building controls evacuation | Sites where more than one panel per building controls evacuation |
| Setup | Standard network card: Mxp-503 and Mxp-003 | Fault-tolerant network card: Mxp-503 and Mxp-003 |
| Maximum cable length | Up to 1.5 km | Up to 1.5 km between nodes |
| No. of nodes | 32 (50 with signal buffer) | 200 |
| No. of zones | 2,000 | 2,000 |
| Typical time to communicate first event | 1 second | 3.5 seconds |

Fire Panel Software

DynamixTools fire system software is easy to understand and makes the complicated simple.

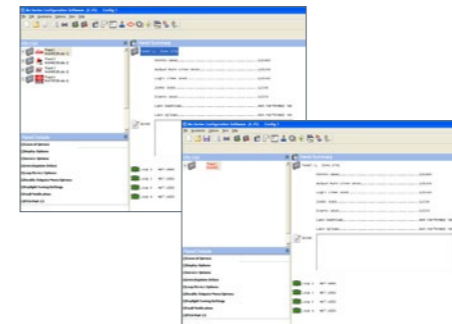
DynamixTools is a range of software options that helps you achieve what you want to quickly and easily.

DynamixTools is being continually developed for the MxPro 5 panel range, adding new features and performance enhancements, false alarm management and alarm verification features.

Our position in the global fire industry means we help guide legislation and can implement software changes quickly, keeping our systems right up to date. We also listen closely to our customers and often produce features for specific client requirements.

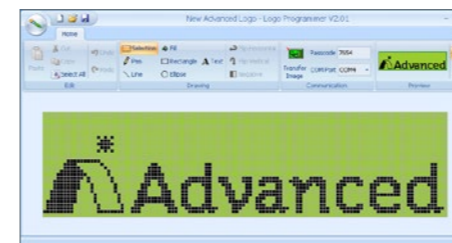
ConfigTool

- Full configuration of single panel or network system
- Automatic design check of site configuration
- Assistance menu helps the engineer to easily configure panels
- Import and export information and print configuration reports



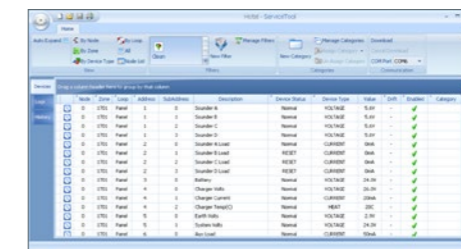
LogoTool

- Allows the installer's logo to be displayed on the panel's graphical LCD display during normal operation
- Uploads standard bitmap images
- Tool allows creation of logos
- JPG and GIF images can be imported



ServiceTool

- Extract device information and event logs from single or multiple panels
- Device history including last activation, test, enable, disable and date created
- User-defined filters allow data to be grouped and searched in many different ways
- View device status, analogue values and drift (contaminated) information
- Network simulation and test feature
- Categorise events and create user-defined reports



MapApp

- Used to easily add site maps to TouchControl touchscreen repeater
- Can use any illustration from a photo to a line drawing, isometric or plan
- Simply draw hotspots onto drawing to add fire zones
- Export to microSD card to add to TouchControl RCT

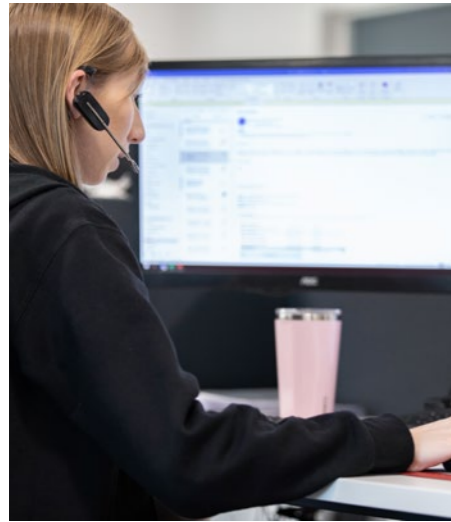


TerminalTool

- Virtual panel display supports remote interrogation
- Direct USB/RS232 or remote modem/IP connection
- Real-time status information and control
- Downloadable event log



MxPro⁵ Parts List



Technical Support

Advanced³⁶⁰

Highly rated customer support. Available by telephone and online.

When you set up an Advanced360 account, you gain access to a host of helpful advice and support.

An account also gives you access to a wealth of online information, from 'how to' videos to datasheets and detailed product manuals. And everyone with an Advanced360 account can benefit from our dedicated monthly newsletter, packed with useful hints and tips.

Services include:

- **Technical support** – available by phone and online from one of our experienced technical support engineers
- **Support history** – open and view your live support tickets and see your full support history – enabling you to refer back to previous advice where required



- **Training** – view and book training slots (direct customers only), and download your training certificates at any time
- **Software** – download software and save your software packages by installation/site
- **Literature** – download manuals, specifications, approved partner certificates, technical information and more
- **Warranty certificates** – download warranty certificates for your sites.



Sign up now at advancedco.com

| Product Code | Description |
|--|--------------------------------------|
| Fire Control Panels (Apollo/Hochiki Protocol) | |
| MxPro 5 – 1-Loop Panels | |
| MX-5101 | 1-Loop fire panel in small enc. |
| MX-5101M | 1-Loop fire panel in medium enc. |
| MX-5101L | 1-Loop fire panel in large enc. |
| MX-5101D | 1-Loop fire panel in large-deep enc. |
| MX-5101R | 1-Loop 19" rack-mount FACP |

| | |
|--------------------------------|---|
| MxPro 5 – 2-Loop Panels | |
| MX-5201 | 1-2-Loop fire panel c/w 1-loop card in medium enc. |
| MX-5201L | 1-2-Loop fire panel c/w 1-loop card in large enc. |
| MX-5201D | 1-2-Loop fire panel c/w 1-loop card in large-deep enc. |
| MX-5201R | 1-2-Loop 19" rack-mount FACP c/w 1-loop card |
| MX-5202 | 1-2-Loop fire panel c/w 2-loop cards in medium enc. |
| MX-5202L | 1-2-Loop fire panel c/w 2-loop cards in large enc. |
| MX-5202D | 1-2-Loop fire panel c/w 2-loop cards in large-deep enc. |
| MX-5202R | 1-2-Loop 19" rack-mount FACP c/w 2-loop cards |

| | |
|--------------------------------|---|
| MxPro 5 – 4-Loop Panels | |
| MX-5401 | 1-4-Loop fire panel c/w 1-loop card in large enc. |
| MX-5401D | 1-4-Loop fire panel c/w 1-loop card in deep enc. |
| MX-5401R | 1-4-Loop 19" rack-mount FACP c/w 1-loop card |
| MX-5401E | 1-4-Loop fire panel c/w 1-loop card in extended enc. |
| MX-5402 | 1-4-Loop fire panel c/w 2-loop cards in large enc. |
| MX-5402D | 1-4-Loop fire panel c/w 2-loop cards in deep enc. |
| MX-5402R | 1-4-Loop 19" rack-mount FACP c/w 2-loop cards |
| MX-5402E | 1-4-Loop fire panel c/w 2-loop cards in extended enc. |
| MX-5403 | 1-4-Loop fire panel c/w 3-loop cards in large enc. |
| MX-5403D | 1-4-Loop fire panel c/w 3-loop cards in deep enc. |
| MX-5403R | 1-4-Loop 19" rack-mount FACP c/w 3-loop card |
| MX-5403E | 1-4-Loop fire panel c/w 3-loop cards in extended enc. |
| MX-5404 | 1-4-Loop fire panel c/w 4-loop cards in large enc. |
| MX-5404D | 1-4-Loop fire panel c/w 4-loop cards in deep enc. |
| MX-5404R | 1-4-Loop 19" rack-mount FACP c/w 4-loop card |
| MX-5404E | 1-4-Loop fire panel c/w 4-loop cards in extended enc. |

| | |
|--------------------------------|--|
| MxPro 5 – 8-Loop Panels | |
| MX-5802 | 2-8-Loop fire panel c/w 2-loop cards. Standard network |
| MX-5803 | 2-8-Loop fire panel c/w 3-loop cards. Standard network |
| MX-5804 | 2-8-Loop fire panel c/w 4-loop cards. Standard network |
| MX-5805 | 2-8-Loop fire panel c/w 5-loop cards. Standard network |
| MX-5806 | 2-8-Loop fire panel c/w 6-loop cards. Standard network |
| MX-5807 | 2-8-Loop fire panel c/w 7-loop cards. Standard network |
| MX-5808 | 2-8-Loop fire panel c/w 8-loop cards. Standard network |
| MX-5802/FT | 2-8-Loop fire panel c/w 2-loop cards. Fault-tolerant network |
| MX-5803/FT | 2-8-Loop fire panel c/w 3-loop cards. Fault-tolerant network |
| MX-5804/FT | 2-8-Loop fire panel c/w 4-loop cards. Fault-tolerant network |
| MX-5805/FT | 2-8-Loop fire panel c/w 5-loop cards. Fault-tolerant network |
| MX-5806/FT | 2-8-Loop fire panel c/w 6-loop cards. Fault-tolerant network |
| MX-5807/FT | 2-8-Loop fire panel c/w 7-loop cards. Fault-tolerant network |
| MX-5808/FT | 2-8-Loop fire panel c/w 8-loop cards. Fault-tolerant network |

| AlarmCalm | |
|--------------|------------------------------------|
| MXP-541A-002 | AlarmCalm button w buzzer (Apollo) |

| Product Code | Description |
|--|--------------------------------------|
| Fire Control Panels (Argus Vega Protocol) | |
| MxPro 5 – 1-Loop V Series Panels | |
| MX-5101V | 1-Loop fire panel in small enc. |
| MX-5101VM | 1-Loop fire panel in medium enc. |
| MX-5101VL | 1-Loop fire panel in large enc. |
| MX-5101VD | 1-Loop fire panel in large-deep enc. |
| MX-5101VR | 1-Loop 19" rack-mount FACP |

| | |
|---|---|
| MxPro 5 – 2-Loop V Series Panels | |
| MX-5201V | 1-2-Loop fire panel c/w 1-loop card in medium enc. |
| MX-5201VL | 1-2-Loop fire panel c/w 1-loop card in large enc. |
| MX-5201VD | 1-2-Loop fire panel c/w 1-loop card in large-deep enc. |
| MX-5201VR | 1-2-Loop 19" rack-mount FACP c/w 1-loop card |
| MX-5202V | 1-2-Loop fire panel c/w 2-loop cards in medium enc. |
| MX-5202VL | 1-2-Loop fire panel c/w 2-loop cards in large enc. |
| MX-5202VD | 1-2-Loop fire panel c/w 2-loop cards in large-deep enc. |
| MX-5202VR | 1-2-Loop 19" rack-mount FACP c/w 2-loop cards |

| | |
|---|--|
| MxPro 5 – 4-Loop V Series Panels | |
| MX-5401V | 1-4-Loop fire panel c/w 1-loop card in large enc. |
| MX-5401VD | 1-4-Loop fire panel c/w 1-loop card in deep enc. |
| MX-5401VR | 1-4-Loop 19" rack-mount FACP c/w 1-loop card |
| MX-5401VE | 1-4-Loop fire panel c/w 1-loop card in extended enc. |
| MX-5402V | 1-4-Loop fire panel c/w 2-loop cards in large enc. |
| MX-5402VD | 1-4-Loop fire panel c/w 2-loop card in deep enc |
| MX-5402VR | 1-4-Loop 19" rack-mount FACP c/w 2-loop cards |
| MX-5402VE | 1-4-Loop fire panel c/w 1-loop card in extended enc. |
| MX-5403V | 1-4-Loop fire panel c/w 3-loop cards in large enc. |
| MX-5403VD | 1-4-Loop fire panel c/w 3-loop card in deep enc |
| MX-5403VR | 1-4-Loop 19" rack-mount FACP c/w 3-loop card |
| MX-5403VE | 1-4-Loop fire panel c/w 1-loop card in extended enc. |
| MX-5404V | 1-4-Loop fire panel c/w 4-loop card in large enc. |
| MX-5404VD | 1-4-Loop fire panel c/w 4-loop card in deep enc |
| MX-5404VR | 1-4-Loop 19" rack-mount FACP c/w 4-loop card |
| MX-5404VE | 1-4-Loop fire panel c/w 1-loop card in extended enc. |

| | |
|--|--|
| MxPro5 – 8-Loop V Series Panels | |
| MX-5802V | 2-8-Loop fire panel c/w 2-loop cards. Standard network |
| MX-5803V | 2-8-Loop fire panel c/w 3-loop cards. Standard network |
| MX-5804V | 2-8-Loop fire panel c/w 4-loop cards. Standard network |
| MX-5805V | 2-8-Loop fire panel c/w 5-loop cards. Standard network |
| MX-5806V | 2-8-Loop fire panel c/w 6-loop cards. Standard network |
| MX-5807V | 2-8-Loop fire panel c/w 7-loop cards. Standard network |
| MX-5808V | 2-8-Loop fire panel c/w 8-loop cards. Standard network |
| MX-5802V/FT | 2-8-Loop fire panel c/w 2-loop cards. Fault-tolerant network |
| MX-5803V/FT | 2-8-Loop fire panel c/w 3-loop cards. Fault-tolerant network |
| MX-5804V/FT | 2-8-Loop fire panel c/w 4-loop cards. Fault-tolerant network |
| MX-5805V/FT | 2-8-Loop fire panel c/w 5-loop cards. Fault-tolerant network |
| MX-5806V/FT | 2-8-Loop fire panel c/w 6-loop cards. Fault-tolerant network |
| MX-5807V/FT | 2-8-Loop fire panel c/w 7-loop cards. Fault-tolerant network |
| MX-5808V/FT | 2-8-Loop fire panel c/w 8-loop cards. Fault-tolerant network |

| AlarmCalm | |
|--------------|-----------------------------------|
| MXP-541V-002 | AlarmCalm button w buzzer (Argus) |

MxPro⁵ Parts List

| Product Code | Description |
|--|--------------------------------------|
| Fire Control Panels (Nittan Evolution Protocol) | |
| MxPro 5 – 1-Loop N Series Panels | |
| MX-5101N | 1-Loop fire panel in small enc. |
| MX-5101NM | 1-Loop fire panel in medium enc. |
| MX-5101NL | 1-Loop fire panel in large enc. |
| MX-5101ND | 1-Loop fire panel in large-deep enc. |
| MX-5101NR | 1-Loop 19" rack-mount FACP |

| MX-5200N Series Panels | |
|-------------------------------|---|
| MX-5201N | 1-2-Loop fire panel c/w 1-loop card |
| MX-5201NL | 1-2-Loop fire panel c/w 1-loop card in large enc. |
| MX-5201ND | 1-2-Loop fire panel c/w 1-loop card in large-deep enc. |
| MX-5201NR | 1-2-Loop 19" rack-mount FACP c/w 1-loop card |
| MX-5202N | 1-2-Loop fire panel c/w 2-loop cards |
| MX-5202NL | 1-2-Loop fire panel c/w 2-loop cards in large enc. |
| MX-5202ND | 1-2-Loop fire panel c/w 2-loop cards in large-deep enc. |
| MX-5202NR | 1-2-Loop 19" rack-mount FACP c/w 2-loop cards |

| MX-5400N Series Panels | |
|-------------------------------|--|
| MX-5401N | 1-4-Loop fire panel c/w 1-loop card in large enc. |
| MX-5401ND | 1-4-Loop fire panel c/w 1-loop card in deep enc. |
| MX-5401NR | 1-4-Loop 19" rack-mount FACP c/w 1-loop card |
| MX-5401NE | 1-4-Loop fire panel c/w 1-loop card in extended enc. |
| MX-5402N | 1-4-Loop fire panel c/w 2-loop cards in large enc. |
| MX-5402ND | 1-4-Loop fire panel c/w 2-loop card in deep enc. |
| MX-5402NR | 1-4-Loop 19" rack-mount FACP c/w 2-loop cards |
| MX-5402NE | 1-4-Loop fire panel c/w 1-loop card in extended enc. |
| MX-5403N | 1-4-Loop fire panel c/w 3-loop cards in large enc. |
| MX-5403ND | 1-4-Loop fire panel c/w 3-loop card in deep enc. |
| MX-5403NR | 1-4-Loop 19" rack-mount FACP c/w 3-loop card |
| MX-5403NE | 1-4-Loop fire panel c/w 1-loop card in extended enc. |
| MX-5404N | 1-4-Loop fire panel c/w 4-loop card in large enc. |
| MX-5404ND | 1-4-Loop fire panel c/w 4-loop card in deep enc. |
| MX-5404NR | 1-4-Loop 19" rack-mount FACP c/w 4-loop card |
| MX-5404NE | 1-4-Loop fire panel c/w 1-loop card in extended enc. |

| MX-5800N Series Panels | |
|-------------------------------|--|
| MX-5802N | 2-8-Loop fire panel c/w 2-loop cards. Standard network |
| MX-5803N | 2-8-Loop fire panel c/w 3-loop cards. Standard network |
| MX-5804N | 2-8-Loop fire panel c/w 4-loop cards. Standard network |
| MX-5805N | 2-8-Loop fire panel c/w 5-loop cards. Standard network |
| MX-5806N | 2-8-Loop fire panel c/w 6-loop cards. Standard network |
| MX-5807N | 2-8-Loop fire panel c/w 7-loop cards. Standard network |
| MX-5808N | 2-8-Loop fire panel c/w 8-loop cards. Standard network |
| MX-5802N/FT | 2-8-Loop fire panel c/w 2-loop cards. Fault-tolerant network |
| MX-5803N/FT | 2-8-Loop fire panel c/w 3-loop cards. Fault-tolerant network |
| MX-5804N/FT | 2-8-Loop fire panel c/w 4-loop cards. Fault-tolerant network |
| MX-5805N/FT | 2-8-Loop fire panel c/w 5-loop cards. Fault-tolerant network |
| MX-5806N/FT | 2-8-Loop fire panel c/w 6-loop cards. Fault-tolerant network |
| MX-5807N/FT | 2-8-Loop fire panel c/w 7-loop cards. Fault-tolerant network |
| MX-5808N/FT | 2-8-Loop fire panel c/w 8-loop cards. Fault-tolerant network |

| Product Code | Description |
|-------------------------|---|
| Remote Terminals | |
| MX-5010 | Remote display terminal (RDT). Standard network |
| MX-5010/FT | Remote display terminal (RDT). Fault tolerant |
| MX-5020 | Remote control terminal (RCT) small. Standard network |
| MX-5020/FT | Remote control terminal (RCT) small. Fault tolerant |
| MX-5030 | Remote control terminal (RCT) large. Standard network |
| MX-5030/FT | Remote control terminal (RCT) large. Fault tolerant |

| TouchControl | |
|---------------------|---|
| TOUCH-10 | Touchscreen terminal (standard network) |
| TOUCH-10/FT | Touchscreen terminal (fault-tolerant network) |
| TOUCH-10-SBB | Touchscreen terminal – surface back box |

| Peripheral Expansion Network Node | |
|--|-------------------------------|
| MXP-545 | PENN (standard network) |
| MXP-545/FT | PENN (fault-tolerant network) |

| Peripherals | |
|--------------------|---|
| MXP-501 | Remote battery temperature sensor |
| MXP-502 | Loop driver card – Apollo, Hochiki, Argus Vega |
| MXP-567 | Loop driver card – Nittan |
| MXP-503 * | Network card – standard |
| MXP-505 | Sounder (pt13) active EOL |
| MXP-506 | Routing termination card |
| MXP-507 * | 2-way relay card |
| MXP-509 * | Network card – fault tolerant |
| MXP-512 * | Printer assembly |
| MXS-509 | Spare paper roll for Mxp-512 printer |
| MXP-532 * | Routing / protection interface |
| MXP-536 * | P-BUS 8-way conventional zone card |
| MXP-537 * | P-BUS 10-way switch input card |
| MXP-538 | P-BUS 16-way switch (form factor) module 16 switches, 3 integrated, programmable LED's per switch (red, yellow, green) |
| MXP-539 | P-BUS MIMIC driver card (16 input + 48 output) 16 switch inputs and 48 LED driver outputs. Supports up to 5 Mxp-052 10 relay output modules |
| MXP-547 * | ESPA pager interface |

* Add F - for fitted

| Modems | |
|---------------|----------------------------|
| MXP-528 | Modem card (24V) |
| MXP-528F | Modem card (24V) – fitted* |
| MXP-028-BX | Modem card (24V) – boxed |

* Can be fitted to a medium, large or extended enclosure only

| Key Switches | |
|---------------------|---|
| MXP-511 | Access enable key switch |
| MXP-511F | Access enable key switch – fitted |
| MXP-516 | 2-POS key switch (trapped) |
| MXP-516F | 2-POS key switch (trapped) – fitted |
| MXP-517 | 2-POS key switch (untrapped) |
| MXP-517F | 2-POS key switch (untrapped) – fitted |
| MXP-515 | 3-POS key switch (trapped) |
| MXP-515F | 3-POS key switch (trapped) – fitted |
| MXP-518-001 | Access enable key switch for 5010/5020 |
| MXP-518-001F | Access enable key switch for 5010/5020 – fitted |
| MXP-518-002 | Access enable key switch for 5030 |
| MXP-518-002F | Access enable key switch for 5030 – fitted |
| MXP-519 | 2-POS key switch (Mom – trapped) |
| MXP-519F | 2-POS key switch (Mom – trapped) – fitted |

| Product Code | Description |
|-----------------------|---|
| LED Indication | |
| MXP-513M-050RD * | 50 Zone fire (red) – medium enc |
| MXP-513M-050RY * | 25 Zone fire (red) + fault (yel) – medium enc. |
| MXP-513M-050YL * | 50 Zone fault (yel) – medium enc. |
| MXP-513L-050RD * | 50 Zone fire (red) – large enc |
| MXP-513L-050RY * | 25 Zone fire (red) + fault (yel) – large enc. |
| MXP-513L-050YL * | 50 Zone fault (yel) – large enc. |
| MXP-513L-100RD * | 100 Zone fire (red) – large enc. |
| MXP-513L-100RY * | 50 Zone fire (red) + fault (yel) – large enc. |
| MXP-513L-100YL * | 100 Zone fault (yel) – large enc. |
| MXP-513L-200RY * | 200 Zone – large enc (red/yel) |
| MXP-513L-050CRY * | 50 Zone column format – large enc (red/yel) |
| MXP-513L-050CRYG * | 50 Zone column format – large enc. (30 x red/yel – 20 grn/yel) |
| MXP-513-050RD * | 50 Zone fire (red) – extended enc. |
| MXP-513-050RY * | 25 Zone fire (red) + fault (y) – extended enc. |
| MXP-513-050YL * | 50 Zone fault (yel) – extended enc. |
| MXP-513-100RD * | 100 Zone fire (red) – extended enc. |
| MXP-513-100RY * | 50 Zone fire (red) + fault (y) – extended enc. |
| MXP-513-100YL * | 100 Zone fault (yel) – extended enc. |
| MXP-513-200RY * | 200 Zone – extended enc. (red/yel) |
| MXP-513-050CRY * | 50 Zone column format – extended enc. (red/yel) |
| MXP-513-050CRYG * | 50 Zone column format – extended enc. (30 x red/yel – 20 grn/yel) |

* Add F - for fitted

| Spares | |
|---------------|--|
| MXS-501 * | Spare single loop base card c/w PSU (no loop cards) *Add V for AV protocol, N for Evolution |
| MXS-502 * | Spare two loop base card c/w PSU (no loop cards) *Add V for AV protocol |
| MXS-503 * | Spare four loop base card c/w PSU (no loop cards) *Add V for AV protocol |
| MXS-504 | Spare display card |
| MXS-506 | Spare MX-5010 card only |
| MXS-506/FT | Spare MX-5010 card only – fault-tolerant |
| MXS-507 | Spare MX-5020 card only |
| MXS-507/FT | Spare MX-5020 card only – fault-tolerant |
| MXS-508 | Spare MX-5030 card only |
| MXS-508/FT | Spare MX-5030 card only – fault-tolerant |
| MXS-511 | Spare access enable key switch (Lorlin style) |
| MXS-516 | Spare 2-position key switch – trapped (Lorlin style) |
| MXS-517 | Spare 2-position key switch – un-trapped (Lorlin style) |
| MXS-511-KEY | Spare Mxp-511 access enable key |
| MXS-518 | MX-5000 spare kits |
| MXS-519 | MX-5000 rack-mount spare kit |
| MXS-520 | MX-5000 remote terminal spares kit |
| MXS-521 | MX-5000 battery leads |
| MXS-522 | MX-5000 rack-mount battery leads |
| MXS-5-FP-S | Spare fascia plate and membrane – small |
| MXS-5-FP-ML | Spare fascia plate and membrane – medium / large |

| Product Code | Description |
|------------------------|---|
| Flushing Bezels | |
| MXM-501 | Semi-flushing bezel – small enc. |
| MXM-502 | Semi-flushing bezel – medium enc. |
| MXM-503 | Semi-flushing bezel – large enc. |
| MXM-509 | Semi-flushing bezel – MX-5030 RCT - large |
| MXM-521 | Semi-flushing bezel – MX-5010 / 5020 |
| MXM-536 | Semi-flushing bezel – extended enc. |

| Plexi glass (Lexan) Door – Retro-fit | |
|---|---|
| MXM-507 | Glazed door kit – large enclosure |
| MXM-507Z | Glazed door kit (double aperture) – large enc. |
| MXM-508 | Glazed door kit – medium enclosure |
| MXM-508Z | Glazed door kit (double aperture) – medium enc. |
| MXS-505 | Spare key – MxPro 5 glazed door |
| MXM-538-D1 | Glazed door kit with zone aperture – extended enc. |
| MXM-538-D2 | Glazed door kit with 2 x glazed apertures – extended enc. |
| MXM-538-D3 | Glazed door kit with mimic aperture – extended enc. |

| Enclosures | |
|-------------------|---|
| MXM-504 | Medium termination enc. |
| MXM-505 | Large termination enc. |
| MXM-506 | Large-deep termination enc. |
| MXM-516 | Medium battery (18ah) / utility enc. |
| MXM-517 | Large battery (18ah) / utility enc. |
| MXM-518 | Deep utility enc. |
| MXM-519 | Chassis mounting plate for utility enc. (3 cards) |
| MXM-546 | MX-5000 deep battery (45ah) enc. |
| MXM-522-BB | Small enc. – spare back box |
| MXM-522-D1 | Small enc. - spare door |
| MXM-523-BB | Medium enc. – spare back box |
| MXM-523-D1 | Medium enc. – spare door |
| MXM-523-D2 | Medium enc. – spare door (c/w zone aperture) |
| MXM-524-BB | Large enc. – spare back box |
| MXM-524-D1 | Large/deep enc. – spare door |
| MXM-524-D2 | Large/deep enc. – spare door (c/w zone aperture) |
| MXM-524-D3 | Large/deep enc. – spare door (c/w 2 x switch apertures) |
| MXM-524-D4 | Large/deep enc. – mimic door with single aperture |
| MXM-524-D5 | Large/deep enc. – blank door |
| MXM-525-BB | Deep enclosure – spare back box |
| MXM-530 | Cable clamp |
| MXM-531 | Medium document enc. |
| MXM-532 | Large document enc. |
| MXM-533 | Modem/ESPA/BMS interface enc. |
| MXM-537-BB | Extended enc. – back box |
| MXM-537-BP | Extended enc. – blank plate for zone LED aperture |
| MXM-537-D1 | Extended enc. – spare door |
| MXM-537-D2 | Extended enc. – spare panel door with mimic aperture |
| MXM-543-BB | Mx-5010/5020 – spare back box |
| MXM-544-BB | Mx-5030 – spare back box |
| MXM-543-D1 | Mx-5010/5020 – spare panel cover |
| MXM-543-D2 | Mx-5010/5020 – spare panel cover + k/s app |
| MXM-544-D1 | Mx-5030 – spare panel cover |
| MXM-543-D2 | Mx-5030 – spare panel cover + k/s app |

MxPro⁵ Parts List

| Product Code | Description |
|---|--|
| Special Finishes | |
| MXM-501-SSB | Semi-flushing bezel – small enc. stainless steel brushed |
| MXM-501-SSM | Semi-flushing bezel – small enc. stainless steel mirrored |
| MXM-502-SSB | Semi-flushing bezel – medium enc. stainless steel brushed |
| MXM-502-SSM | Semi-flushing bezel – medium enc. stainless steel mirrored |
| MXM-503-SSB | Semi-flushing bezel – large enc. stainless steel brushed |
| MXM-503-SSM | Semi-flushing bezel – large enc. stainless steel mirrored |
| MXM-509-SSB | Semi-flushing bezel – RCT large. Stainless steel brushed |
| MXM-509-SSM | Semi-flushing bezel – RCT large stainless steel mirrored |
| MXM-521-SSB | Semi-flushing bezel – MX-5010 / 5020 stainless steel brushed |
| MXM-521-SSM | Semi-flushing bezel – MX-5010 / 5020 stainless steel mirrored |
| MXM-522-D1-SSB * | Small enc. – spare door. Stainless steel brushed |
| MXM-522-D1-SSM | Small enc. – spare door. Stainless steel mirrored |
| MXM-523-D1-SSB * | Medium enc. – spare door. Stainless steel brushed |
| MXM-523-D1-SSM | Medium enc. – spare door. Stainless steel mirrored |
| MXM-523-D2-SSB * | Medium enc. – spare door (c/w zone aperture). Stainless steel brushed |
| MXM-523-D2-SSM | Medium enc. – spare door (c/w zone aperture). Stainless steel mirrored |
| MXM-524-D1-SSB * | Large/deep enc. – spare door. Stainless steel brushed |
| MXM-524-D1-SSM | Large/deep enc. – spare door. Stainless steel mirrored |
| MXM-524-D2-SSB * | Large/deep enc. – spare door (c/w zone aperture). Stainless steel brushed |
| MXM-524-D2-SSM | Large/deep enc. – spare door (c/w zone aperture). Stainless steel mirrored |
| MXM-543-D1-SSB | MX-5010/5020 – panel cover. Stainless steel brushed |
| MXM-543-D1-SSM | MX-5010/5020 – panel cover. Mirror polished |
| MXM-543-D2-SSB | MX-5010/5020 – panel cover + KS Ap. Stainless steel brushed. |
| MXM-543-D2-SSM | MX-5010/5020 – panel cover + KS Ap. Mirror polished |
| MXM-544-D1-SSB | MX-5030 RCT – panel cover. Stainless steel brushed. |
| MXM-544-D1-SSM | MX-5030 RCT – panel cover. Mirror polished |
| MXM-544-D2-SSB | MX-5030 RCT – panel cover + KS Ap. Stainless steel brushed |
| MXM-544-D2-SSM | MX-5030 RCT – panel cover + KS Ap. Mirror polished |
| MXM-524-BB-SSB | Spare large back box for use w/SS door (MW334E) |
| MXM-523-BB-SSB | Spare medium back box for use w/SS door (MW334E) |
| MXM-522-BB-SSB | Spare small back box for use w/SS door (MW334E) |
| MXM-525-BB-SSB | Spare deep back box for use w/SS door (MW334E) |
| * Add F - fitted (includes Silver back box & hinge strip) | |

| Product Code | Description |
|-----------------------------|---|
| Rack-Mount Enclosure | |
| MXM-510-16U | IP55 19" Rack-mount enclosure – 16U high |
| MXM-510-20U | IP55 19" Rack-mount enclosure – 20U high |
| MXM-510-KL | CAM key-lock kit for outer door |
| MXM-510-BS | 19" Rack-mount – battery shelf |
| MXM-510-BS1 | 19" Rack-mount – battery shelf lower |
| MXM-510-CP | 19" Rack-mount – chassis plate |
| MXP-513R-050RD | 19" Rack-mount 4U LED card – 50 zone fire (red) |
| MXP-513R-050RY | 19" Rack-mount 4U LED card – 50 zone fire/flt (r/y) |
| MXP-513R-050YL | 19" Rack-mount 4U LED card – 50 zone flt (yel) |
| MXP-513R-100RD | 19" Rack-mount 4U LED card – 100 zone fire (red) |
| MXP-513R-100RY | 19" Rack-mount 4U LED card – 100 zone fire/flt (r/y) |
| MXP-513R-100YL | 19" Rack-mount 4U LED card – 100 zone fault (yellow) |
| MXP-513R-200RY | 19" Rack-mount 4U programmable LED card – 200 zone (red/yel) |
| MXP-513R-050CRY | 19" Rack-mount 4U programmable LED card – 50 zone column format (red/yel) |
| MXP-513R-050CRYG | 19" Rack-mount 4U programmable LED card – 50 zone column format (30 x red/yel - 20 x grn/yel) |
| MXP-514 | MxPro 5 rack AC filter card |
| MXM-511-1U | 19" Rack-mount blanking plate – 1U |
| MXM-511-2U | 19" Rack-mount blanking plate – 2U |
| MXM-511-3U | 19" Rack-mount blanking plate – 3U |
| MXM-511-4U | 19" Rack-mount blanking plate – 4U |
| MXM-511-6U | 19" Rack-mount blanking plate – 6U |
| MXM-511-1U-TOP | 19" Rack-mount blanking plate – 1U-TOP |
| MXM-512 | 19" Rack-mount blanking LED plate – 4U |
| MXM-513-BB | 19" Rack-mount back box – 6U |
| MXM-513-BP | 19" Rack-mount switch / LED blank plate – 6U |
| MXM-513-D1 | 19" Rack-mount door D1 blank – 6U |
| MXM-513-D2 | 19" Rack-mount door D2 LED – 6U |
| MXM-513-D3 | 19" Rack-mount door D1 c/w aperture – 6U |
| MXM-513-FP | 19" Rack-mount fascia plate blank – 6U |
| MXM-513-MF | 19" Rack-mount switch / LED mounting frame – 6U |
| MXM-514-BB | 19" Rack-mount back box – 8U |
| MXM-514-D1 | 19" Rack-mount door D1 c/w aperture – 8U |
| MXM-514-FP | 19" Rack-mount fascia plate blank – 8U |
| MXM-515-6U | 19" Rack-mount chassis plate – 6U |
| MXM-515-8U | 19" Rack-mount chassis plate – 8U |
| MXM-535-D1 | 19" Rack-mount 13U hinged door (accepts 9 x MXP-538 switch cards or blank plates) |

| Product Code | Description |
|--|--|
| Network Boosters and Convertors | |
| MXP-030 | Standard network booster/isolator (DIN-rail module) |
| MXP-631-MM | Ad-Net / fibre optic converter multi-mode |
| MXP-631-SM | Ad-Net / fibre optic converter single-mode |
| MXP-542 | 24VDC – 24VDC convertor / isolator (for use with Mxp-631 Fibre network convertors and MxPro 5) |

| Mimic Driver Cards, Indicators & Network I/O Controllers | |
|---|--|
| MXP-020-100 | 100 way remote LED mimic driver (un-boxed) |
| MXP-020-100/FT | Fault tolerant 100-way remote LED mimic driver (un-boxed) |
| MXP-045 | 50-way network I/O controller (un-boxed) |
| MXP-045/FT | 50-way fault-tolerant network I/O controller (un-boxed) |
| MXS-026 | High intensity red LED & 600mm lead for Mxp-020 / 027 & 045 |
| MXS-026-YEL | High intensity yellow LED & 600mm lead for Mxp-020 / 027 & 045 |
| MXS-026-GRN | High intensity green LED & 600mm lead for Mxp-020 / 027 & 045 |
| MXP-052 | Mimic driven 10-way relay output card |
| MXP-052-DIN | Mimic driven 10-way relay output card in din-rail carrier |
| MXS-031-2T | 2-Position key switch trapped for Mxp-045 |
| MXS-031-2U | 2-Position key switch un-trapped for Mxp-045 |
| MXS-031-3U | 3-Position key switch un-trapped for Mxp-045 |

| P-Bus Expansion Cards | |
|---------------------------------------|---|
| MXP-034 (F)* | Peripheral bus – 4-way sounder card |
| MXP-034-BXP | Peripheral bus – 4-way sounder card with 4A PSU (boxed) |
| MXP-035(F)* | Peripheral bus – 4-way relay card |
| MXP-035-BXP | Peripheral bus – 4-way relay card with 1.5A PSU (boxed) |
| * Add F - for fitted (except Mx-5100) | |

| EN54-4 'Approved' Power Supply Units | |
|---|--|
| MXP-549 | 1.5A EN54-4 PSE & battery charger |
| MXP-550 | 3A EN54-4 PSE & battery charger |
| MXP-550/D | 3A EN54-4 PSE & battery charger. Deep enc. |
| MXP-551 | 5A EN54-4 PSE & battery charger |
| MXP-551/D | 5A EN54-4 PSE & battery charger. Deep enc. |
| MXP-049 | 1.5A EN54-4 PSU & charger (boxed – 7Ah battery capacity) |
| MXP-050-001 | 3A EN54-4 PSU & charger (boxed – 7Ah battery capacity) |
| MXP-050-002 | 3A EN54-4 PSU & charger (boxed – 17Ah battery capacity) |
| MXP-051 | 5A EN54-4 PSU & charger (boxed – 17Ah battery capacity) |
| MXP-051/D | 5A EN54-4 PSU & charger (boxed – 38Ah battery capacity) |

| MxPro 5 Input and Output Cards | |
|---------------------------------------|---|
| MXP-046 | Damper interface module (Apollo protocol) |
| MXP-046-BX1 | Damper interface module – boxed (Apollo protocol) |
| MXP-053 | 2-way input stretch / latch module |

| Product Code | Description |
|--|---|
| MxPro 5 Interfaces | |
| MXP-510-BX | BMS / Graphics I/F (boxed) |
| MXP-510-BX/FT | BMS / Graphics I/F (boxed) fault tolerant |
| MXP-510 | BMS / Graphics I/F (card only) |
| MXP-510/FT | BMS / Graphics I/F (card only) fault tolerant |
| MXP-547-BX | ESPA Pager interface (boxed) |
| MXP-554-BX | IP Gateway (boxed) |
| MXP-554-BX/FT | IP Gateway (boxed) fault tolerant |
| MXP-554 | IP Gateway (card only) |
| MXP-554/FT | IP Gateway (card only) fault tolerant |
| MXP-642 | Commander- BACnet / Modbus (IP) interface (standard/basic) ** |
| MXP-642C | Commander- BACnet / Modbus (IP) interface (configured) ** |
| 23-PSU/250 | Power supply for commander 12VDC 2.5A |
| * Add F - fitted (except Mx-5100). ** Requires Mxp-510 BMS Interface | |

| DynamixTools PC Software | |
|--|---|
| See "Cables & Connectors" section for spare and USB compatible upload / download leads | |
| PC-NET-003 | MxPro configuration software & lead |
| PC-NET-003-USB | MxPro configuration software & USB upload/download lead |
| PC-NET-004 | MxPro remote dial-up software (virtual panel) |
| PC-NET-005-L1 | Graphical control software* standard version up to 3 panels |
| PC-NET-005-L2 | Graphical control software* standard version up to 15 panels |
| PC-NET-005-L2p | Graphical control software* premium version up to 15 panels |
| PC-NET-005-L3 | Graphical control software* standard version up to 200 panels |
| PC-NET-005-L3p | Graphical control software* premium version up to 200 panels |
| PC-NET-005-SWM | Smart watch module |
| PC-NET-005-SWM6 | Smart watch module (4-6 panel) |
| PC-NET-005-SWM15 | Smart watch module (7-15 panel) |
| PC-NET-005-SWM4R | Smart watch module – 4 inputs |
| PC-NET-005-SCU | Smart cube unit |
| PC-NET-05-L1R-L2R | Dongle upgrade L1R to L2R |
| PC-NET-05-L2R-L3R | Dongle upgrade L2R to L3R |
| PC-NET-05-L2R-L2P | Dongle upgrade L2R to L2P |
| PC-NET-05-L2P-L3P | Dongle upgrade L2P to L3P |
| PC-NET-05-L3R-L3P | Dongle upgrade L3R to L3P |
| PC-NET-007 | MxPro logo programming software |
| PC-NET-015 | MxPro service tool software |
| * requires Mxp-510 BMS interface | |

| Cables & Connectors (Upload/Download Leads) | |
|--|--|
| UP-001 | RS232 9-way to 3-way plug in connector (MX upload/download lead) |
| UP-006 | USB upload /download lead for MX config software |



Email: enquiries@advancedco.com
Web: www.advancedco.com

 @advancedlive

 Advanced

 Advanced Fire

 **NBS Source**
PARTNER

Find us on NBS National BIM Library
www.nationalbimlibrary.com/advanced-electronics-ltd

MxPro 5 and all other Advanced product brands are
trademarks of Advanced Electronics Ltd. All rights reserved



A **Halma** company