

Contents

About Advanced	4
AxisGo system diagram	6
AxisGo features and benefits	8
Panel comparison	10
Easy configuration	11
Let Go of false alarms	12
AxisGo for powerful, flexible service reporting	13
Good to Go – typical uses	14
AxisGo technical support	16
Advanced training	17
Technical specifications	18
Parts list and order codes	19

AxisGo

The powerful, flexible, single-loop fire panel

Designed to be fast to fit, quick to configure and easy to use, AxisGo saves install time whilst bringing you complete peace of mind that your single-panel site has the highest levels of fire protection.

Offering cost-effective access to popular premium features from our Axis EN range in a simpler, non-networkable format, AxisGo provides powerful protection for a wide range of smaller sites.

Packed with future-proof technology and flexible features – including false alarm management, built-in zonal LEDs and a handy service tool – AxisGo's ready to become your Go-to!

Creating a safer future



Advanced – Made in the UK. Trusted around the world

At Advanced, we're committed to building a safer future. We create fire protection and life safety solutions that protect people and property in more than 80 countries across the globe.

Our products are shaped by decades of research and development expertise as well as ongoing investment in new technologies. This ensures they provide years of high performance and reliability – for ultimate peace of mind.

Everything we deliver is rigorously tested and approved to exacting quality standards – which is why Advanced products are trusted by customers the world over and synonymous with quality, performance and ease of use.



Advanced headquarters, Newcastle, UK



We understand that few fire protection challenges are the same, so as well as our mass-customised ranges, we also offer fully-customised solutions. This flexibility gives you complete control over the functions, format and finish of products to suit your site's unique specification.

We are dedicated to providing excellent service and have an international network of offices and agents to help you access sales support with ease – wherever you are in the world.



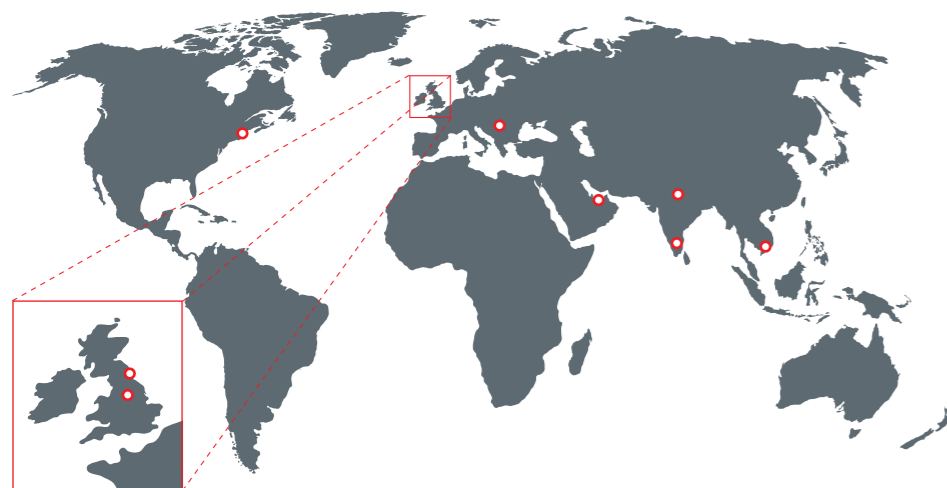
In addition, our training and technical services are free of charge to all our direct customers and consistently rated as excellent.

For added reassurance, Advanced is part of the safety sector of FTSE 100 company Halma plc. This global group of life-saving technology companies has a clear purpose to grow a safer, cleaner, healthier future for everyone, every day.

Advanced was named **Fire Safety Systems Manufacturer of the Year** at the Fire & Security Matters Awards 2022.



A Halma company



Welcome to the world of Advanced



The Shard, London, UK



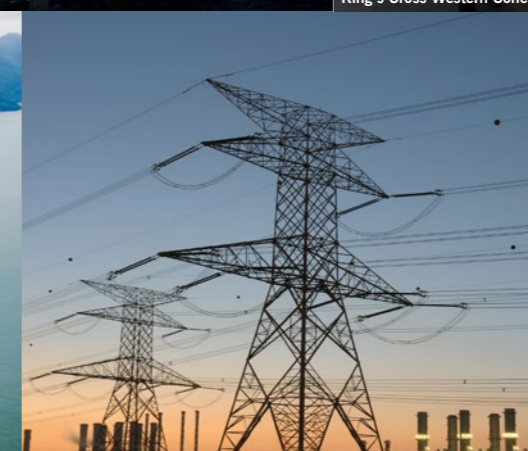
Hagia Sophia, Istanbul, Turkey



King's Cross Western Concourse, London, UK



Macau Bridge, Hong Kong, China



M-Station, Dubai, UAE



University of Edinburgh, Scotland, UK

AxisGo system diagram



AxisGo

The powerful, flexible, single-loop fire system



Easy to install and use

Time is money, so we've built in a host of features that make AxisGo a breeze to install, configure and use.

- An easy-fit chassis and unique door design ensure installation is fast and fuss-free
- Familiar controls and menus mean there's no lengthy learning curve
- A new, intuitive config tool makes setup quicker and easier than ever
- A powerful design checker helps to ensure that your system is configured correctly, saving time on site
- If you do need support, our highly rated technical services team's got your back with advice, tips and training.



Fast and efficient

AxisGo is designed with speed and efficiency in mind.

- Built-in features including USB, RTC and ethernet ports
- Latest microcontroller technology ensures high-speed operation.



Feature-rich and flexible

We understand that small sites aren't always simple, so we've packed AxisGo with flexibility to give you the best of all worlds.

- A wide range of cause-and-effect programming to suit your site
- Comprehensive false alarm management and reduction options to minimise unwanted alarms
- Enhanced diagnostics for fewer faults, faster fixes and better performance
- Optional expansion module for fire and fault routing equipment
- 15 zonal LEDs as standard without the need to buy a separate LED zone card
- Our range of versatile Axis EN devices gives you complete freedom to quickly and easily design the perfect wired and wireless solutions for your site
- A choice of two panel address sizes so you only buy the capacity you need
- Language variants available.



Ready for you now... and for the future

We understand that fire protection solutions need longevity.

- AxisGo's state-of-the-art technology ensures high performance today – and for years to come
- Future ethernet expansion.

AxisGo features and benefits

Anatomy of the AxisGo panel

1 High-resolution, high-contrast, graphical LCD display backed by high-speed microprocessor technology.

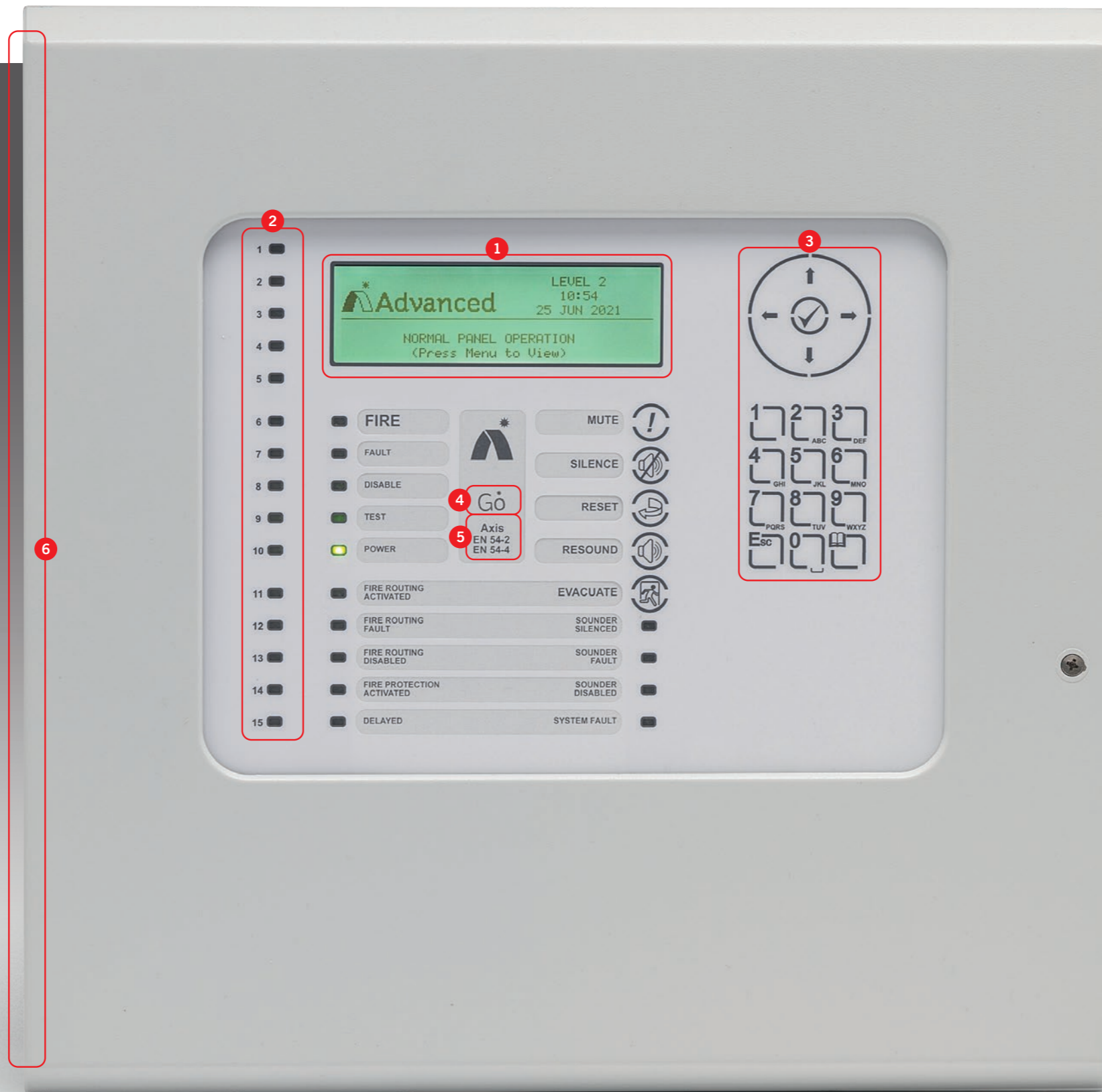
2 15 zonal LEDs and optional expansion module for fire and fault routing equipment

3 Tactile keypad allows simple click-and-select programming for faster engineer configuration and simple end-user operation.

4 Two performance options with different configurable address limits for greater site-specific flexibility – look out for AxisGo or AxisGo+ on the panel fascia.

5 Approved to EN 54 Parts 2 & 4 by FM Approvals.

6 Innovative door hinge for quick removal and easier installation.



Installer-friendly auto-learn and loop detection for faster, trouble-free setup.

500 fire and 5000 general event logging with advanced diagnostic precision to aid installation and fault-finding.

15 integral zone LEDs, plus up to 35 additional software indication zones.

Two on-board sounder outputs, three on-board relay outputs.

Start from battery button.

Optional 3 monitored input/outputs for fire/fault routing (with P-Bus adaptor and routing card) for full EN54 compliance when connected to an alarm receiving centre.

USB type B port for quick, easy PC connection.

Ethernet port.

Slide-in label for language variants.

Panel comparison

AxisGo – Axis EN 1-loop panel comparison



	Note	AxisGo & AxisGo+	MX-5101
Specification	Date of first manufacture	2021	2010
	Menu response time (integrated display and keyboard)	4 to 9 times faster	38kBps
	Maximum number of loops	1	1
	Loop current	500mA	500mA
	Maximum addresses per loop EN54-2: < 512 detection devices/panel	AxisGo: 50 / AxisGo+: 240	240
	Protocol	Axis EN	Axis EN
	Number of inputs on board	2 (1 key switch, 1 monitored)	9
	Number of sounder outputs on board	2 A 1A each N.B. Max 1A load (programmable)	2 A 1A each N.B. Max 1A load (programmable)
	Number of relay outputs on board	3 (1A 30VAC/DC (max) to 10mA 5V (min))	2 (expandable to 4)
	Other monitored I/O	3 I/O for fire fault routing	Full P-Bus support
	Number of events	5000 event and diagnostic + 500 fire	5000 event and diagnostic + 500 fire
	Auxiliary supply	100mA (with AxisGo PBus Adapter Card)	500mA
Battery standby	Up to 2 x 12V, 7Ah Max (typically 24hr hr standby only)	Up to 2 x 12V, 7Ahr >24Ahr	
Function	Max. number of zones	50	200
	Networkable, repeaters	No	Yes
	Max. number of zones on network	-	2000
	Max. number of panels in network	-	200
	Programmable push buttons	-	4
	Zonal LED	15 integrated	20 (programmable)
	Next-generation PC config tool	Supported	Not supported
	RS232 communication	No	Yes
	RS485 communication	No	Yes (P-Bus)
	USB communication	Full speed USB	USB type B interface for PC connection
Installation	Ethernet communication	Yes (10-Base-T, 100-Base-T)	Yes (with module)
	BMS module onboard/external/3rd party	No	3rd party
	Webserver/cloud	Digital ready (with AdvancedLive)*	Yes (with module)
	Graphic software	No	Yes
	Dimensions H x W x D mm	345 x 345 x 87	345 x 345 x 87
	Semi recess	No	Yes
	Access door	Innovative 'no hinge' door for quick removal and easy installation	Keylock with 2 hinge-pins
	Availability	Distribution and direct	Distribution and direct
Regulatory	Warranty	3 years	3 years
	EN54-2:1997 +A1:2006 (control and indicating equipment)	Yes (FM)	Yes (FM)
EN54-4:1997 +A1:2002 +A2:2006 (power supply equipment)	Yes (FM)	Yes (FM)	

*For further details, please contact your sales representative.

Our easiest configuration software yet

Our new ConfigTool, supported by AxisGo, is clear, intuitive and makes setup fast, flexible and fuss-free.

Pre-installed USB device drivers

The installer automatically adds the USB device drivers to Windows, so you don't have to. This means you can connect your PC to the AxisGo panel and begin communication straight out of the box.

Improved user interface

We've updated the user interface with speed and efficiency in mind. You can access most operations from the program menu, along with a description of each function. We've also changed many of the editors to make best use of screen space, and to support multi-select, reducing design setup time.



Fast communication

AxisGo transfers configuration settings to/from the panel significantly faster than other panels.

Integration of device and input/output editing

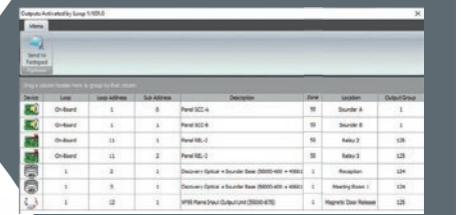
You can see all the devices fitted by address in a grid layout. Simply by selecting an address, you can configure all device inputs and outputs from the same screen.



A range of specially designed features bring you a host of time-saving benefits:

Cause and effect checking

Cause and effect checking is greatly improved, making it possible to prove a design and correct any mistakes without actually having to go to site.



Fast loading and saving

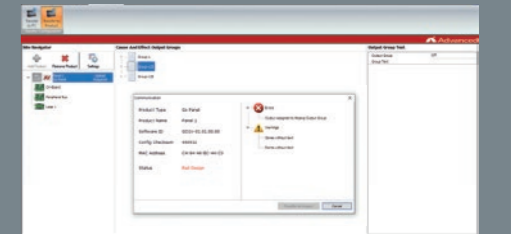
The near instant loading and saving of files saves you time and money.

Design checker

A sophisticated design check takes place on upload to highlight common problems. This stops you uploading designs with major issues, saving you fault finding time. You can also run a more in-depth design checker at any time to see information about any problems and warnings that arise.

Quick support

As intuitive as the ConfigTool is, you may occasionally need a reminder about its functions, so we've included a user manual in the program menu that you can access anytime.



AxisGo

Let Go of false alarms



Verification

Investigation

Reduction

AlarmCalm Complete False Alarm Management.

AxisGo gives you access to the power and flexibility of our AlarmCalm false alarm management and reduction software.

This highly effective system lets you design a solution around the needs of your specific site and can radically reduce the disruption, inconvenience and costs associated with unwanted alarms.

AlarmCalm uses fast hardware, powerful software and optional, intelligent loop devices to build a total solution to false alarms that's versatile and easy to configure.

The AlarmCalm Button is an intelligent verification device that can be installed on the loop and works with the AlarmCalm software to allow occupants to acknowledge a fire alarm signal locally, if they believe it has been triggered accidentally.



The AlarmCalm Button

Features:

- Versatile cause and effect**
 In-depth control over alarm verification and investigation delays to outputs.
- Customised management for any site**
 Divide your building(s) into 'building areas', each with quick-to-apply unique or group false alarm management settings. 50 building areas per panel.
- Unlimited points**
 No restriction on the number of points in a building area and configurable by point.
- Global acknowledgement**
 Panel inputs can be programmed to manage verification and output delays.
- Full event log**
 All verification and output delays recorded in panel event logs.
- Flexible verification**
 Set verification by building area, day/night, on/off, change verification times, verification by second device or device mode change.
- Multiple verification inputs and outputs**
 Inputs can include optical, heat and multisensors, callpoints and AlarmCalm Button or other input modules. Outputs can be sounders, beacons and relays etc. Sounder ring styles can be configured.
- Failsafe operation**
 Total control over verification times. Users can only extend verification once. Set maximum number of areas in verification before full fire is signaled.
- Easy management of outputs**
 Output delays are handled in exactly the same way as verifications, making setup very simple.

Visit alarmcalm.advancedco.com or contact us now for a demo

AxisGo for powerful, flexible service reporting

AxisGo brings you full access to all the features and benefits of our popular ServiceTool.

Simply connect your PC to the fire panel using a USB cable and you'll be able to:

- Download service reports
- Inspect device history
- Keep track of service schedules
- Demonstrate proof of servicing.

You can filter your data to suit your exact needs according to:

- Zone number
- Device type
- Loop number.

You can also:

- Create custom categories containing specific devices tagged for quick identification
- Customise reports to show the information you need and export them as PDF, Excel or HTML files.



Get quick and easy access to a panel's complete device data – both historic and real time via USB cable.

- No more time-consuming manual data extraction and reporting.



View a panel's complete device history, including when it was installed and last:

- Activated
- Disabled
- Tested
- Enabled

- Provides proof of a panel's status at any given point in time e.g. on commissioning.
- All data is stored, so none is overwritten and lost.



Get an 'at-a-glance' view of the current status of a panel's devices.

- Easily spot devices that haven't been tested so you can check the accuracy of third-party servicing reports.



Use customised data filters to quickly spot how frequently particular devices go into fault.

- Helps you to focus on potential trouble spots and ensure they are checked during servicing.



Identify devices not recently checked and highlight them with flags so they're prioritised on the next service visit.

- Keep on top of service schedules so you never miss a deadline again.



Choose the data you want to extract from the panel using a wide range of filters.

- Create completely customised reports in PDF, Excel and HTML formats that are easy to use, send, store and compare.



View drift data, real time temperature and analogue values.

- Predict which devices are becoming contaminated so you can clean/replace them before they cause false alarms.

Good to go Go – easy solutions to common problems

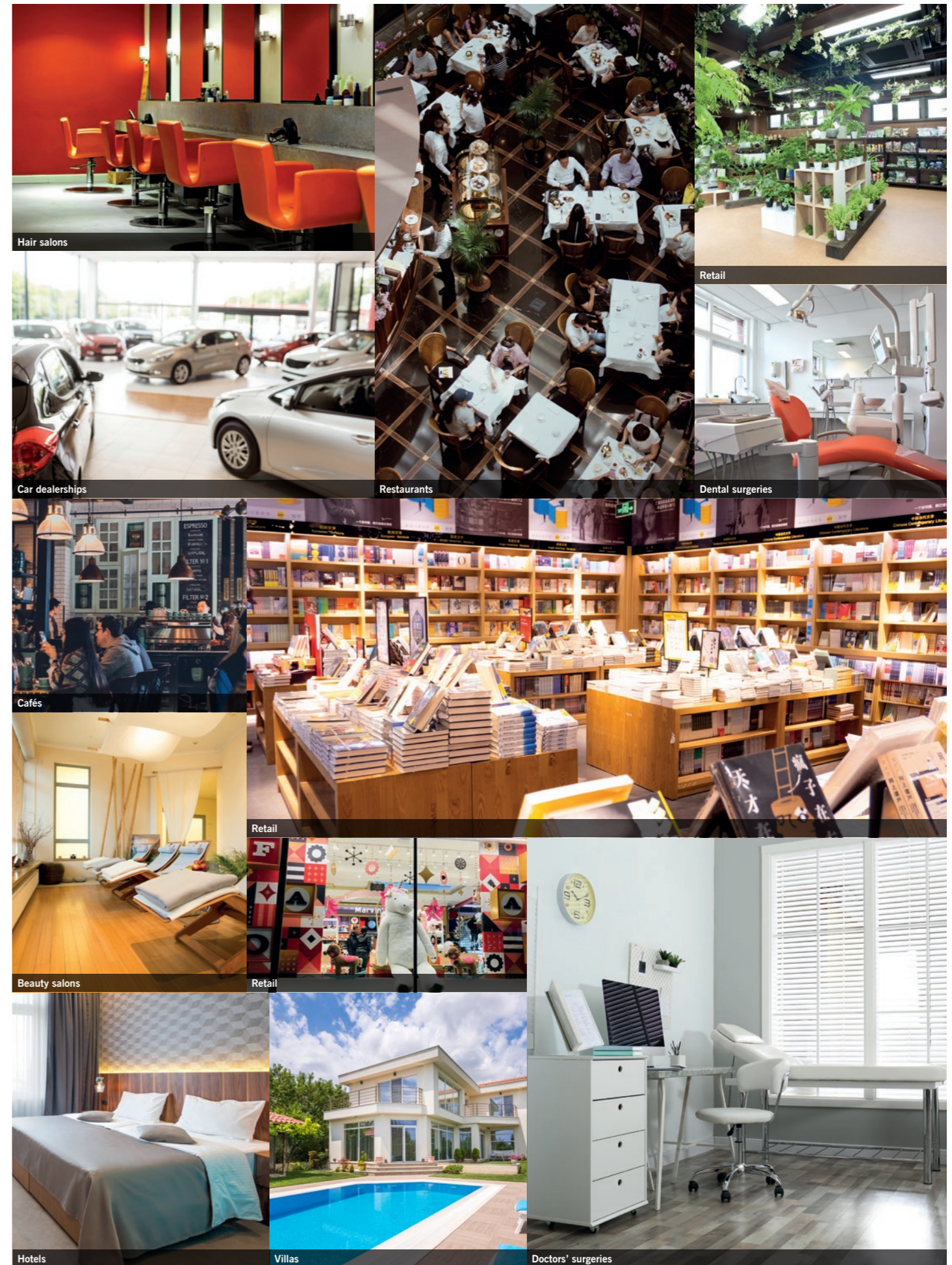
Packing power and flexibility into a non-networkable, single-loop panel, AxisGo's additional features make it the ideal solution for a wide range of smaller, single-panel sites.

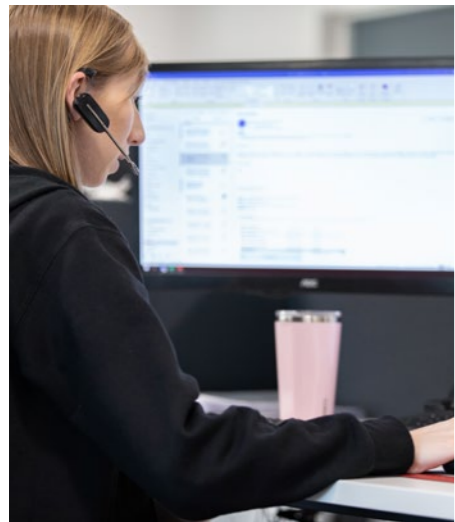
Sector	Retail	Hospitality	Commercial/Industrial	Health/Beauty	Accommodation
Typical location	<ul style="list-style-type: none"> – Smaller privately-owned shops – Branches of national retail chains 	<ul style="list-style-type: none"> – Bars – B&Bs – Guesthouses – Hotels – Restaurants – Cafés – Branches of national hospitality chains 	<ul style="list-style-type: none"> – Small offices – Industrial units – Car dealerships – Utilities (remote sites) 	<ul style="list-style-type: none"> – Doctors' surgeries – Dental surgeries – Beauty salons – Hairdressers 	<ul style="list-style-type: none"> – Villas
Benefits	Cost-effectiveness – choose AxisGo or AxisGo+ address capacities to suit your site				
	Quality and reliability – premium Axis EN features in a single-loop panel				
	Fast and efficient installation and commissioning				
	Latest technology for long-life convenience				



Go anywhere!

Ease of installation and use combined with premium solutions – such as **AlarmCalm** false alarm management and **ServiceTool** support and reporting – make **AxisGo** suitable for the simplest to the most challenging standalone panel applications.





Technical support

Advanced **360***

Highly rated customer support. Available by telephone and online.

When you set up an Advanced360 account, you gain access to a host of helpful advice and support.

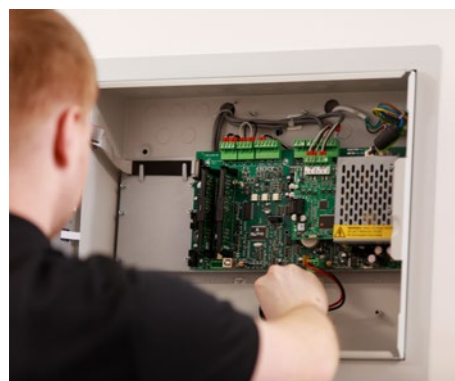
An account also gives you access to a wealth of online information, from 'how to' videos to datasheets and detailed product manuals. And everyone with an Advanced360 account can benefit from our dedicated monthly newsletter, packed with useful hints and tips.

Services include:

- **Technical support** – available by phone and online from one of our experienced technical support engineers
- **Support history** – open and view your live support tickets and see your full support history – enabling you to refer back to previous advice where required



- **Training** – view and book training slots (direct customers only), and download your training certificates at any time
- **Software** – download software and save your software packages by installation/site
- **Literature** – download manuals, specifications, approved partner certificates, technical information and more
- **Warranty certificates** – download warranty certificates for your sites.



Advance your expertise for Advanced peace of mind

We understand it's hard to balance the day job with keeping on top of product and legislative changes.

That's why we've carefully designed our training to make your life easier.

Whether you need a quick product overview or hands-on engineering tips; early warning of new regulations or detailed guidance on the best ways to ensure compliance, our expert team's here to help.

You can choose from a wide range of modules covering our fire, evacuation and lighting ranges.

Courses run regularly both online and in-person and we can also customise training to suit you.

To find out more about the training available, please email techsupport@advancedco.com

or call

+44 (0)345 894 7000

to request one of our training brochures or discuss your needs.

Creating a safer future

Sign up now at advancedco.com

Advanced – made in the UK. Trusted around the world.

Discover more: advancedco.com | enquiries@advancedco.com | +44 (0)345 894 7000

AxisGo technical specifications

Technical specifications	
Part Numbers	AxisGo1, AxisGo1+
Enclosure	Steel IP30 RAL7035
Dimensions	H x W x D mm 345 x 345 x 87
Weight (excluding batteries)	4Kg
Temperature Range	-5 C to 40 C
Humidity (RH)	95% max
Cable Entries (20mm knockouts)	14x top
AC Supply	220-240V, 50 – 60 Hz, 1.0A max
Safety	EN62368-1, Class 1, Pollution Degree 2, Overvoltage Category II
Battery Capacity	2 x 12V 4Ah Internal (min) 2 x 12V 7Ah Internal (max)
Charging Current	0.35A Temp Compensated
Deep Discharge Cut-off	19.5V
Power Supply	On-board 24V DC, 1.5A High Efficiency Off-Line Switched Mode
Power Supply	18.0V – 28.0V
Ripple (Vpkpk)	Up to 1.0V
Max Battery Ohms	1.8Ω ± 0.1Ω
I _{max(a)}	1.15A
I _{max(b)}	1.5A
Number of Fire Zones	50 max
Number of Loops	1
Loop Current ²	500mA max
Protocol	Axis EN
Sounder Outputs ²	2 x 1A Programmable (1A total)
Relay Outputs	3 x 1A 30VAC/DC (max) to 10mA 5V (min) Programmable
Auxiliary Output ^{2 3}	24V DC, 100mA (with GOP-001 fitted)
Display	LCD White backlit 240 x 64 Graphical LCD
Programmable Inputs	1 x Key Switch, 1 x Monitored
USB	USB type B interface for PC connection
Network	None
Ethernet	10-Base-T, 100-Base-T
Event Log	5000 Event and Diagnostic + 500 Fire

1 Minimum/maximum specifications for the AUX and Sounder outputs. Detector Loop voltage is not dependant on AC or battery voltage.

2 Total output current from panel not to exceed I_{max(b)} less internal power consumption.

3 Aux supply tracks a maximum of 0.5V below battery terminal voltage when no mains supply is available.

Maximum Addresses		
AxisGo1	Axis EN	50 addresses
AxisGo1+	Axis EN	240 addresses

AxisGo parts list and order codes

AxisGo		
AxisGo1	AxisGo1 - 1-Loop Fire Alarm Panel – Grey	50 addresses
AxisGo+		
AxisGo1+	AxisGo1+ - 1-Loop Fire Alarm Panel – Grey	240 addresses
Options		
GOP-001	AxisGo PBUS Adaptor Card	
MXP-532	AxisGo Routing/Protection Interface	
MXP-506	AxisGo Routing Termination Card	

Ready to Go ?

AxisGo is available to order through your usual Advanced supplier.

Your dispatch and anticipated delivery date will be confirmed upon order placement.

To discuss your requirements, please contact your sales representative, call us on **+44 (0)345 894 7000**, or you can send an enquiry to customerservices@advancedco.com. Alternatively, you can visit our website: www.advancedco.com where you will find a host of information about our full range of products and services.





Email: enquiries@advancedco.com
Web: www.advancedco.com

 @advancedlive

 Advanced

 Advanced Fire

Find us on NBS National BIM Library
www.nationalbimlibrary.com/advanced-electronics-ltd

Go, AxisGo and AxisGo+ are trademarks of Advanced Electronics Ltd.
All rights reserved.



A **Halma** company